

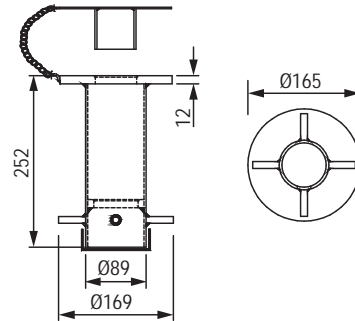
SOCKET FLUSH MOUNT

- Il Flush Mount socket è completo di chiusura e barre per essere annegato nel cemento fresco
- The Flush Mount socket is complete with cover and bars for drowning in fresh cement

SFMG0500: ZINCATO - Galvanized
SFMS0500: AISI 316 - Aisi 316



| Codice Code | Materiale Material | Peso Weight kg |
|----------------|---|----------------------|
| SFMG0500 | Acciaio zincato Galvanized steel | 5 |
| SFMS0500 | Acciaio inox AISI 316 Stainless steel AISI 316 | 4 |



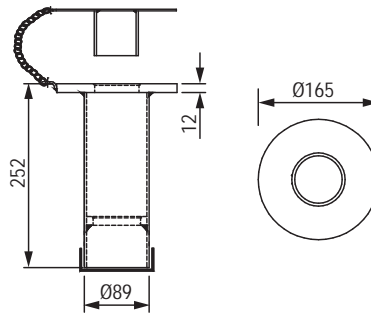
SOCKET FLUSH MOUNT RESIN BOND

- Il Flush Mount Resin Bond socket completo di chiusura può essere fissato mediante resina in un foro nel cemento esistente
- The Flush Mount Resin Bond socket with cover can be fixed by resin in a hole in the existing concrete

SFRG0500: ZINCATO - Galvanized
SFRS0500: AISI 316 - Aisi 316



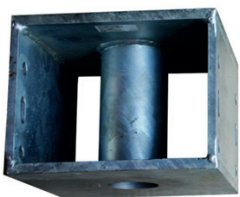
| Codice Code | Materiale Material | Peso Weight kg |
|----------------|---|----------------------|
| SFRG0500 | Acciaio zincato Galvanized steel | 5 |
| SFRS0500 | Acciaio inox AISI 316 Stainless steel AISI 316 | 4 |



SOCKET BRIDGE MOUNT

- Il Bridge Mount socket può essere fissato in una struttura metallica ad esempio su passerelle o ponti
- The Bridge Mount socket can be fixed in a metal structure such as on walkways or bridges

SBMG0500: ZINCATO - Galvanized
SBMS0500: AISI 316 - Aisi 316
SBMA0500: ALLUMINIO - Aluminium



| Codice Code | Materiale Material | Peso Weight kg |
|----------------|---|----------------------|
| SBMG0500 | Acciaio zincato Galvanized steel | 19 |
| SBMS0500 | Acciaio inox AISI 316 Stainless steel AISI 316 | 19 |
| SBMA0500 | Alluminio Aluminium | 7 |

