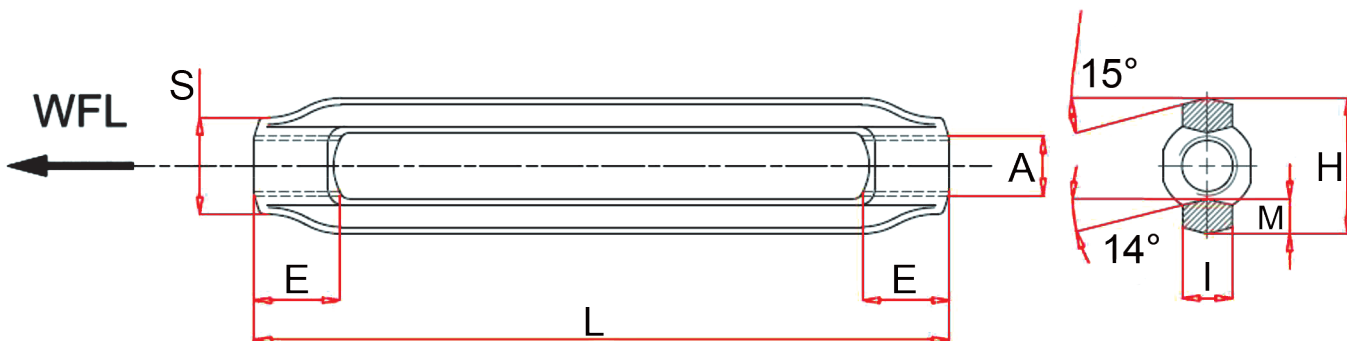


TIPO APERTO

OPEN TYPE

- Acciaio S235JR
- Finitura: zincatura
- Coefficiente di sicurezza 5

- S235JR Steel
- Finish: galvanized
- Safety factor 5

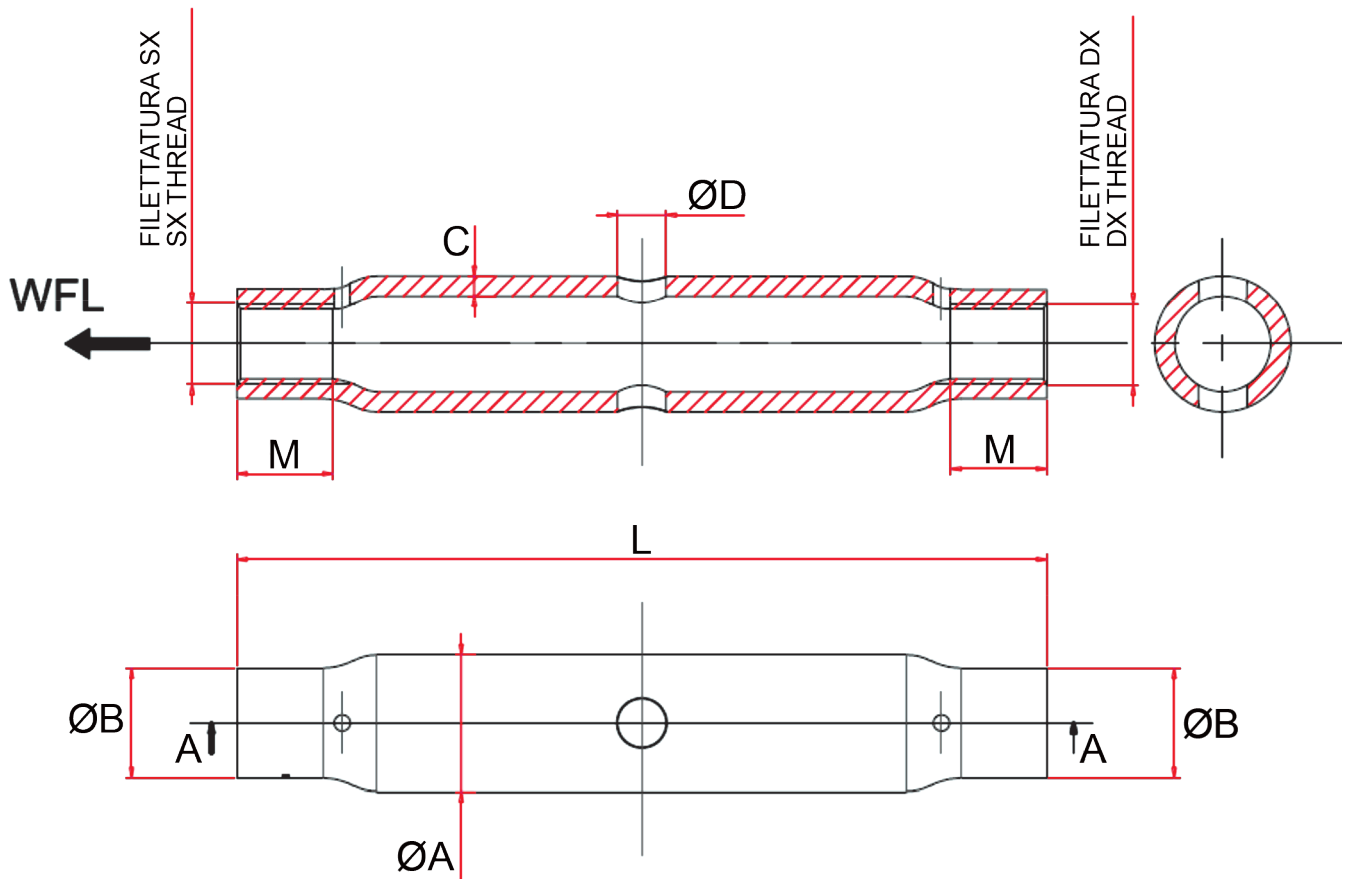


Codice Code	Dimensioni Dimensions								Forza limite lavoro WFL kg	Peso Weight g
	A mm	A inch	E mm	H mm	I mm	L mm	M mm	S mm		
ACANAP05	M5 x 0.8	3/16	9	15	5.83	80	15.30	11	115	32
ACANAP06	M6 x 1	1/4	9	15	5.83	80	15.30	11	160	32
ACANAP08	M8 x 1.25	5/16	12	19	6.68	105	18.42	14	300	55
ACANAP10	M10 x 1.5	3/8	14	23	8.40	125	22.70	16	470	90
ACANAP12	M12 x 1.75	1/2	17	28	10.08	140	27.44	19	690	145
ACANAP14	M14 x 2	9/16	20	32	11.80	170	31.70	22	940	250
ACANAP16	M16 x 2	5/8	23	36	13.70	190	36.24	26	1290	340
ACANAP18	M18 x 2.5	11/16	26	40	15.10	205	40.16	29	1660	460
ACANAP20	M20 x 2.5	3/4	28	45	17.00	220	45.18	32	2130	650
ACANAP22	M22 x 2.5	7/8	31	50	18.90	240	50.20	35	2630	880
ACANAP24	M24 x 3	1"	34	55	20.33	260	55.10	38	3060	1040
ACANAP27	M27 x 3	1" 1/8	38	62	23.11	270	61.80	43	4000	1950
ACANAP30	M30 x 3.5	1" 3/16	42	68	25.43	280	67.90	48	4860	2450
ACANAP33	M33 x 3.5	1" 1/4	47	75	28.17	290	74.56	53	6040	2500
ACANAP36	M36 x 4	1" 3/8	51	81	30.50	300	80.86	57	6500	3180
ACANAP39	M39 x 4	1" 1/2	55	88	33.14	300	88.20	62	7900	3850

TIPO CHIUSO PER TENDITORI DIN 1478

CLOSED TYPE FOR TURNBUCKLES

- Acciaio S235JR
- Finitura: zincatura
- Coefficiente di sicurezza 5
- S235JR Steel
- Finish: galvanized
- Safety factor 5



Codice Code	Misura Size	Filettatura Thread	Dimensioni Dimensions						Forza limite lavoro WFL kg	Peso Weight g
			Ø A mm	Ø B mm	C mm	Ø D mm	L mm	M mm		
ACANCH12	12	M12 x 1,75	25,0	18,0	4,0	10	125	15,0	690	230
ACANCH16	16	M16 x 2	30,0	22,5	4,5	10	170	20,0	1290	460
ACANCH20	20	M20 x 2,5	33,7	27,0	5,0	12	200	24,0	2130	650
ACANCH24	24	M24 x 3	42,4	32,0	5,6	12	255	29,0	3060	1200
ACANCH27	27*	M27 x 3	42,4	34,6	5,6	12	255	40,0	4000	1220
ACANCH30	30**	M30 x 3,5	51,0	38,0	6,3	16	255	36,0	4860	1650
ACANCH36	36**	M36 x 4	63,5	47,5	8,0	16	295	43,0	6500	2860
ACANCH42	42**	M42 x 4,5	70,0	57,0	8,8	20	330	51,0	9700	4100

* Misure non contemplate nella norma DIN 1478

** Acciaio S355JR

* Measures not covered by DIN 1478

** S355JR Steel