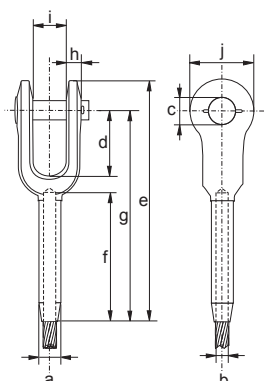


TERMINALE A PRESSARE APERTO TIPO TE11Z
OPEN SWAGE TERMINAL TE11Z TYPE

Acciaio zincato a caldo
Hot dip galvanized steel

- Efficienza dell'applicazione il 90% del carico di rottura della fune
- Dimensioni senza protezione alla corrosione
- Le dimensioni dopo la pressatura sono solo indicative
- Application efficiency 90% minimum breaking load of the rope
- Dimensions without corrosion protection
- After swage dimensions are only indicative



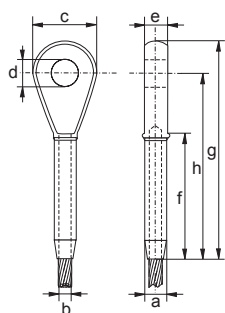
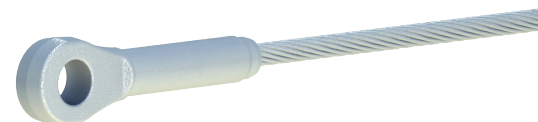
| Codice Code | Fune Rope Ø mm | Diametro prima della pressatura Diameter before swage | | Diametro dopo la pressatura Diameter after swage | | Dimensioni Dimensions | | | | | | | | Peso Weight Kg | |
|----------------|-----------------------------|---|--|--|---------------|--------------------------|---------|---------|---------|---------|---------|---------|---------|--------------------------|---------|
| | | a mm | | a (min) mm | a (max) mm | b mm | c mm | d mm | e mm | f mm | g mm | h mm | i mm | | j mm |
| ASSA08 | 8 | 20 | | 17,2 | 18,0 | 8,8 | 21 | 44 | 164 | 81 | 140 | 12 | 21 | 41 | 0,57 |
| ASSA09 | 9 | 20 | | 17,2 | 18,0 | 9,8 | 21 | 44 | 164 | 81 | 140 | 12 | 21 | 41 | 0,56 |
| ASSA10 | 10 | 20 | | 17,2 | 18,0 | 10,8 | 21 | 44 | 164 | 81 | 140 | 12 | 21 | 41 | 0,56 |
| ASSA11 | 11 | 25 | | 22,0 | 23,1 | 11,8 | 25 | 51 | 206 | 108 | 177 | 14 | 25 | 51 | 1,11 |
| ASSA12 | 12 | 25 | | 22,0 | 23,1 | 12,8 | 25 | 51 | 206 | 108 | 177 | 14 | 25 | 51 | 1,09 |
| ASSA13 | 13 | 25 | | 22,0 | 23,1 | 13,8 | 25 | 51 | 206 | 108 | 177 | 14 | 25 | 51 | 1,09 |
| ASSA14 | 14 | 32 | | 28,3 | 29,5 | 14,8 | 30 | 57 | 250 | 135 | 213 | 16 | 32 | 63 | 2,11 |
| ASSA15 | 15 | 32 | | 28,3 | 29,5 | 15,9 | 30 | 57 | 250 | 135 | 213 | 16 | 32 | 63 | 2,11 |
| ASSA16 | 16 | 32 | | 28,3 | 29,5 | 17,0 | 30 | 57 | 250 | 135 | 213 | 16 | 32 | 63 | 2,06 |
| ASSA18 | 18 | 39 | | 34,7 | 36,1 | 19,0 | 35 | 70 | 301 | 162 | 258 | 20 | 38 | 76 | 3,68 |
| ASSA19 | 19 | 39 | | 34,7 | 36,1 | 20,0 | 35 | 70 | 301 | 162 | 258 | 20 | 38 | 76 | 3,68 |
| ASSA20 | 20 | 39 | | 34,7 | 36,1 | 21,1 | 35 | 70 | 301 | 162 | 258 | 20 | 38 | 76 | 3,68 |
| ASSA22 | 22 | 43 | | 37,8 | 39,4 | 23,2 | 41 | 83 | 353 | 189 | 302 | 23 | 44 | 86 | 5,38 |
| ASSA24 | 24 | 50 | | 44,2 | 45,7 | 25,4 | 51 | 95 | 402 | 216 | 345 | 26 | 51 | 102 | 5,45 |
| ASSA25 | 25 | 50 | | 44,2 | 45,7 | 26,4 | 51 | 95 | 402 | 216 | 345 | 26 | 51 | 102 | 5,45 |
| ASSA26 | 26 | 50 | | 44,2 | 45,7 | 27,4 | 51 | 95 | 402 | 216 | 345 | 26 | 51 | 102 | 5,45 |
| ASSA28 | 28 | 57 | | 50,5 | 52,1 | 29,5 | 57 | 108 | 452 | 243 | 390 | 30 | 57 | 114 | 12 |
| ASSA32 | 32 | 64 | | 56,9 | 58,4 | 33,8 | 64 | 121 | 506 | 270 | 431 | 30 | 63 | 127 | 16,2 |
| ASSA36 | 34-36 | 71 | | 63,2 | 65,0 | 37 | 64 | 133 | 540 | 297 | 460 | 33 | 63 | 133 | 20,5 |

- Tolleranza sulle dimensioni ± 3%.
- Tolerance on dimensions ± 3%.

TERMINALE A PRESSARE CHIUSO TIPO TE12Z
CLOSED SWAGE TERMINAL TE12Z TYPE

Acciaio zincato a caldo
Hot dip galvanized steel

- Efficienza dell'applicazione il 90% del carico di rottura della fune
- Dimensioni senza protezione alla corrosione
- Le dimensioni dopo la pressatura sono solo indicative
- Application efficiency 90% minimum breaking load of the rope
- Dimensions without corrosion protection
- After swage dimensions are only indicative



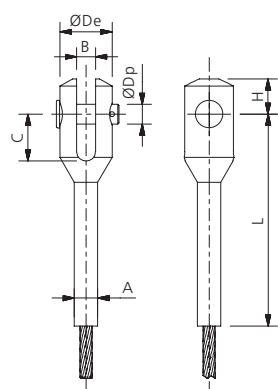
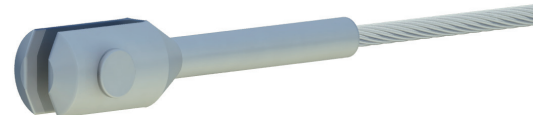
| Codice Code | Fune Rope Ø mm | Diametro prima della pressatura Diameter before swage | | Diametro dopo la pressatura Diameter after swage | | Dimensioni Dimensions | | | | | | | | Peso Weight Kg |
|----------------|-----------------------------|---|--|--|---------------|--------------------------|---------|---------|---------|---------|---------|---------|------|--------------------------|
| | | a mm | | a (min) mm | a (max) mm | b mm | c mm | d mm | e mm | f mm | g mm | h mm | | |
| ASSC08 | 8 | 20 | | 17,2 | 18,0 | 8,8 | 43 | 22 | 17 | 81 | 140 | 114 | 0,35 | |
| ASSC09 | 9 | 20 | | 17,2 | 18,0 | 9,8 | 43 | 22 | 17 | 81 | 140 | 114 | 0,33 | |
| ASSC10 | 10 | 20 | | 17,2 | 18,0 | 10,8 | 43 | 22 | 17 | 81 | 140 | 114 | 0,35 | |
| ASSC11 | 11 | 25 | | 22,0 | 23,1 | 11,8 | 51 | 27 | 22 | 108 | 176 | 146 | 0,66 | |
| ASSC12 | 12 | 25 | | 22,0 | 23,1 | 12,8 | 51 | 27 | 22 | 108 | 176 | 146 | 0,64 | |
| ASSC13 | 13 | 25 | | 22,0 | 23,1 | 13,8 | 51 | 27 | 22 | 108 | 176 | 146 | 0,64 | |
| ASSC14 | 14 | 32 | | 28,3 | 29,5 | 14,8 | 63 | 32 | 29 | 135 | 222 | 184 | 1,35 | |
| ASSC15 | 15 | 32 | | 28,3 | 29,5 | 15,9 | 63 | 32 | 29 | 135 | 222 | 184 | 1,35 | |
| ASSC16 | 16 | 32 | | 28,3 | 29,5 | 17,0 | 63 | 32 | 29 | 135 | 222 | 184 | 1,31 | |
| ASSC18 | 18 | 39 | | 36,1 | 36,1 | 19,0 | 76 | 37 | 33 | 162 | 264 | 219 | 2,3 | |
| ASSC19 | 19 | 39 | | 36,1 | 36,1 | 20,0 | 76 | 37 | 33 | 162 | 264 | 219 | 2,3 | |
| ASSC20 | 20 | 39 | | 34,7 | 36,1 | 21,1 | 76 | 37 | 33 | 162 | 264 | 219 | 2,3 | |
| ASSC22 | 22 | 43 | | 37,8 | 39,4 | 23,2 | 89 | 43 | 38 | 189 | 308 | 257 | 3,4 | |
| ASSC24 | 24 | 50 | | 44,2 | 45,7 | 25,4 | 102 | 52 | 44 | 216 | 349 | 292 | 4,97 | |
| ASSC25 | 25 | 50 | | 44,2 | 45,7 | 26,4 | 102 | 52 | 44 | 216 | 349 | 292 | 4,97 | |
| ASSC26 | 26 | 50 | | 44,2 | 45,7 | 27,4 | 102 | 52 | 44 | 216 | 349 | 292 | 4,97 | |
| ASSC28 | 28 | 57 | | 50,5 | 52,1 | 29,5 | 114 | 59 | 51 | 243 | 387 | 324 | 7,17 | |
| ASSC32 | 32 | 64 | | 56,9 | 58,4 | 33,8 | 127 | 65 | 57 | 270 | 438 | 365 | 10,4 | |
| ASSC36 | 34-36 | 71 | | 63,2 | 65,0 | 37 | 133 | 65 | 57 | 297 | 479 | 400 | 13,3 | |

- Tolleranza sulle dimensioni ± 3%.
- Tolerance on dimensions ± 3%.

TERMINALE A PRESSARE CON FORCELLA TIPO TE13Z
FORK SWAGE TERMINAL TE13Z TYPE

Acciaio zincato a caldo
Hot dip galvanized steel

- Efficienza dell'applicazione il 90% del carico di rottura della fune
- Dimensioni senza protezione alla corrosione
- Le dimensioni dopo la pressatura sono solo indicative
- Application efficiency 90% minimum breaking load of the rope
- Dimensions without corrosion protection
- After swage dimensions are only indicative

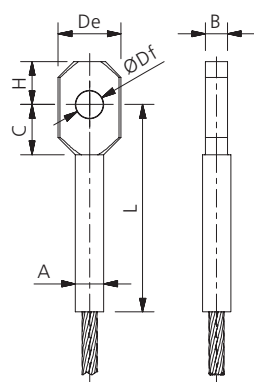
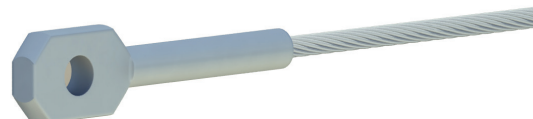


| Codice Code | Fune Rope Ø mm | MBF kN | Dimensioni Dimensions | | | | | Dopo pressatura After swage | | Peso Weight kg |
|----------------|-------------------------|-----------|--------------------------|---------|---------|----------|---------|--------------------------------|---------|----------------------|
| | | | Dp mm | B mm | H mm | De mm | C mm | A mm | L mm | |
| TE13Z-10 | 10 | 85 | 16 | 15 | 27 | 40 | 35 | 17 | 166 | 0,44 |
| TE13Z-12 | 12 | 129 | 20 | 16 | 33 | 50 | 41 | 22 | 198 | 0,93 |
| TE13Z-14 | 14 | 176 | 23 | 19 | 38 | 55 | 48 | 29 | 225 | 1,45 |
| TE13Z-16 | 16 | 230 | 27 | 23 | 44 | 65 | 57 | 29 | 261 | 1,94 |
| TE13Z-18 | 18 | 295 | 29 | 25 | 47 | 69 | 61 | 35 | 282 | 2,65 |
| TE13Z-20 | 20 | 365 | 32 | 29 | 52 | 75 | 69 | 35 | 315 | 2,97 |
| TE13Z-22 | 22 | 440 | 34 | 30 | 55 | 80 | 72 | 38 | 341 | 3,76 |
| TE13Z-24 | 24 | 535 | 38 | 33 | 61 | 90 | 81 | 45 | 372 | 5,67 |
| TE13Z-26 | 26 | 635 | 42 | 36 | 68 | 100 | 90 | 45 | 408 | 6,98 |
| TE13Z-28 | 28 | 740 | 44 | 39 | 71 | 100 | 95 | 51 | 428 | 7,85 |
| TE13Z-30 | 30 | 850 | 48 | 42 | 77 | 110 | 102 | 57 | 457 | 10,79 |
| TE13Z-32 | 32 | 970 | 52 | 46 | 83 | 120 | 110 | 57 | 493 | 12,44 |
| TE13Z-34 | 34 | 1095 | 54 | 47 | 86 | 128 | 114 | 64 | 518 | 15,96 |
| TE13Z-36 | 36 | 1225 | 58 | 50 | 93 | 135 | 122 | 64 | 552 | 17,69 |
| TE13Z-38 | 38 | 1365 | 62 | 53 | 99 | 145 | 130 | 70 | 583 | 22,66 |
| TE13Z-40 | 40 | 1510 | 64 | 56 | 102 | 150 | 134 | 70 | 611 | 23,52 |
| TE13Z-42 | 42 | 1670 | 68 | 58 | 108 | 160 | 141 | 77 | 640 | 30,15 |
| TE13Z-44 | 44 | 1830 | 70 | 61 | 111 | 165 | 146 | 90 | 657 | 37,95 |
| TE13Z-46 | 46 | 2005 | 74 | 64 | 117 | 170 | 153 | 90 | 688 | 39,79 |
| TE13Z-48 | 48 | 2180 | 78 | 67 | 124 | 178 | 162 | 90 | 723 | 43,31 |

TERMINALE A PRESSARE CON OCCHIO TIPO TE14Z
CLOSED (EYE) SWAGE TERMINAL TE14Z TYPE

Acciaio zincato a caldo
Hot dip galvanized steel

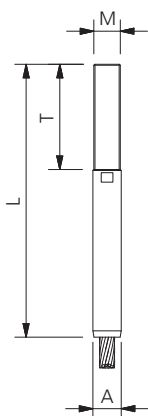
- Efficienza dell'applicazione il 90% del carico di rottura della fune
- Dimensioni senza protezione alla corrosione
- Le dimensioni dopo la pressatura sono solo indicative
- Application efficiency 90% minimum breaking load of the rope
- Dimensions without corrosion protection
- After swage dimensions are only indicative



| Codice Code | Fune Rope Ø mm | MBF kN | Dimensioni Dimensions | | | | | Dopo pressatura After swage | | Peso Weight kg |
|----------------|-------------------------|-----------|--------------------------|---------|---------|---------|----------|--------------------------------|---------|----------------------|
| | | | Df mm | B mm | H mm | C mm | De mm | A mm | L mm | |
| TE14Z-10 | 10 | 85 | 17 | 14 | 26 | 41 | 39 | 17 | 155 | 0,30 |
| TE14Z-12 | 12 | 129 | 21 | 15 | 32 | 47 | 48 | 22 | 182 | 0,51 |
| TE14Z-14 | 14 | 176 | 24 | 18 | 37 | 54 | 54 | 29 | 211 | 0,95 |
| TE14Z-16 | 16 | 230 | 28 | 22 | 43 | 63 | 63 | 29 | 239 | 1,22 |
| TE14Z-18 | 18 | 295 | 30 | 24 | 46 | 67 | 68 | 35 | 263 | 1,89 |
| TE14Z-20 | 20 | 365 | 34 | 28 | 52 | 75 | 77 | 35 | 291 | 2,30 |
| TE14Z-22 | 22 | 440 | 36 | 29 | 55 | 79 | 81 | 38 | 317 | 2,85 |
| TE14Z-24 | 24 | 535 | 40 | 32 | 62 | 87 | 90 | 45 | 345 | 4,17 |
| TE14Z-26 | 26 | 635 | 44 | 35 | 68 | 96 | 99 | 45 | 373 | 4,75 |
| TE14Z-28 | 28 | 740 | 46 | 38 | 71 | 101 | 104 | 51 | 398 | 6,48 |
| TE14Z-30 | 30 | 850 | 50 | 41 | 77 | 109 | 113 | 57 | 426 | 8,64 |
| TE14Z-32 | 32 | 970 | 54 | 45 | 83 | 117 | 122 | 57 | 454 | 9,73 |
| TE14Z-34 | 34 | 1095 | 56 | 46 | 86 | 121 | 126 | 64 | 478 | 11,93 |
| TE14Z-36 | 36 | 1225 | 60 | 49 | 93 | 130 | 135 | 64 | 508 | 13,15 |
| TE14Z-38 | 38 | 1365 | 64 | 52 | 99 | 138 | 144 | 70 | 536 | 16,55 |
| TE14Z-40 | 40 | 1510 | 66 | 55 | 102 | 143 | 149 | 70 | 561 | 17,84 |
| TE14Z-42 | 42 | 1670 | 70 | 57 | 108 | 150 | 158 | 77 | 588 | 22,01 |
| TE14Z-44 | 44 | 1830 | 72 | 60 | 111 | 155 | 162 | 90 | 613 | 29,75 |
| TE14Z-46 | 46 | 2005 | 76 | 63 | 117 | 163 | 171 | 90 | 640 | 31,80 |
| TE14Z-48 | 48 | 2180 | 80 | 66 | 124 | 172 | 180 | 90 | 669 | 34,13 |

TERMINALE A PRESSARE FILETTATO TIPO TE15Z
THREAD SWAGE TERMINAL TE15Z TYPE

- Efficienza dell'applicazione il 90% del carico di rottura della fune
- Zincatura elettrolitica
- A richiesta zincatura a caldo con filetto ripassato per accoppiamento con dado
- Dimensioni senza protezione alla corrosione
- Le dimensioni dopo la pressatura sono solo indicative
- Application efficiency 90% minimum breaking load of the rope
- Electrolytic galvanization
- Upon request hot dip galvanized with thread machined for nut coupling
- Dimensions without corrosion protection
- After swage dimensions are only indicative

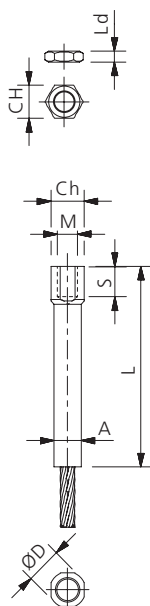
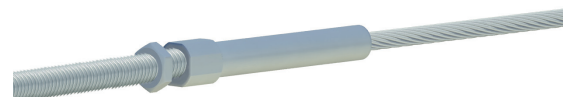


| Codice Code | Fune Rope Ø mm | MBF kN | Filetto Thread | | Dopo pressatura After swage | | Peso Weight kg |
|----------------|-------------------------|-----------|-------------------|---------|--------------------------------|---------|----------------------|
| | | | M mm | T mm | A mm | L mm | |
| TE15Z-10 | 10 | 85 | 18 x 2,50 | 74 | 17 | 188 | 0,32 |
| TE15Z-12 | 12 | 129 | 20 x 2,50 | 87 | 22 | 220 | 0,55 |
| TE15Z-14 | 14 | 176 | 24 x 3,00 | 104 | 29 | 258 | 1,04 |
| TE15Z-16 | 16 | 230 | 27 x 3,00 | 115 | 29 | 288 | 1,23 |
| TE15Z-18 | 18 | 295 | 30 x 3,50 | 125 | 35 | 322 | 1,94 |
| TE15Z-20 | 20 | 365 | 33 x 3,50 | 150 | 35 | 368 | 2,31 |
| TE15Z-22 | 22 | 440 | 36 x 3,00 | 170 | 38 | 412 | 3,13 |
| TE15Z-24 | 24 | 535 | 39 x 3,00 | 180 | 45 | 444 | 4,38 |
| TE15Z-26 | 26 | 635 | 42 x 3,00 | 200 | 45 | 484 | 4,96 |
| TE15Z-28 | 28 | 740 | 45 x 3,00 | 210 | 51 | 514 | 6,61 |
| TE15Z-30 | 30 | 850 | 48 x 3,00 | 230 | 57 | 554 | 8,75 |
| TE15Z-32 | 32 | 970 | 52 x 3,00 | 242 | 57 | 586 | 9,68 |
| TE15Z-34 | 34 | 1095 | 56 x 4,00 | 260 | 64 | 627 | 12,62 |
| TE15Z-36 | 36 | 1225 | 60 x 4,00 | 271 | 64 | 657 | 13,80 |
| TE15Z-38 | 38 | 1365 | 60 x 4,00 | 276 | 70 | 682 | 16,16 |
| TE15Z-40 | 40 | 1510 | 64 x 4,00 | 288 | 70 | 714 | 17,51 |
| TE15Z-42 | 42 | 1670 | 68 x 4,00 | 300 | 77 | 746 | 21,98 |
| TE15Z-44 | 44 | 1830 | 72 x 4,00 | 305 | 90 | 771 | 29,73 |

TERMINALE A PRESSARE CON FILETTATURA INTERNA TIPO TE16Z
INNER THREAD SWAGE TERMINAL TE16Z TYPE

Acciaio zincato
Galvanized steel

- Lunghezza massima barre filettate 3 m
- Efficienza dell'applicazione il 90% del carico di rottura della fune
- Dimensioni senza protezione alla corrosione
- Le dimensioni dopo la pressatura sono solo indicative
- Maximum length thread bar 3 m
- Application efficiency 90% minimum breaking load of the rope
- Dimensions without corrosion protection
- After swage dimensions are only indicative



| Codice Code | Fune Rope | MBF | Dimensioni Dimensions | | | | | | | Dopo pressatura After swage | | Peso Weight |
|----------------|--------------|------|--------------------------|----------|------------------------------|------------------------------------|----------|-------------|-------------|--------------------------------|---------|----------------|
| | | | D mm | Ch mm | Filetto Thread M mm | Controdamo Lock nut Ld mm | CH mm | S min mm | S max mm | A mm | L mm | |
| TE16Z-10 | 10 | 85 | 28 | 23 | 14 x 2,0 | 11 | 22 | 12 | 17 | 17 | 150 | 0,28 |
| TE16Z-12 | 12 | 129 | 35 | 30 | 18 x 2,5 | 15 | 27 | 15 | 22 | 22 | 177 | 0,53 |
| TE16Z-14 | 14 | 176 | 38 | 33 | 20 x 2,5 | 16 | 30 | 16 | 24 | 29 | 193 | 0,92 |
| TE16Z-16 | 16 | 230 | 40 | 35 | 24 x 3,0 | 20 | 36 | 20 | 29 | 29 | 212 | 0,97 |
| TE16Z-18 | 18 | 295 | 45 | 40 | 27 x 3,0 | 22 | 41 | 22 | 33 | 35 | 237 | 1,63 |
| TE16Z-20 | 20 | 365 | 50 | 45 | 30 x 3,5 | 24 | 46 | 24 | 36 | 35 | 265 | 1,79 |
| TE16Z-22 | 22 | 440 | 55 | 50 | 33 x 3,5 | 27 | 50 | 27 | 40 | 38 | 295 | 2,42 |
| TE16Z-24 | 24 | 535 | 60 | 55 | 33 x 3,5 | 27 | 55 | 27 | 40 | 45 | 310 | 3,51 |
| TE16Z-26 | 26 | 635 | 60 | 55 | 36 x 3,0 | 29 | 55 | 29 | 44 | 45 | 332 | 3,56 |
| TE16Z-28 | 28 | 740 | 65 | 60 | 39 x 3,0 | 32 | 60 | 32 | 47 | 51 | 353 | 4,97 |
| TE16Z-30 | 30 | 850 | 70 | 65 | 39 x 3,0 | 32 | 60 | 32 | 47 | 57 | 370 | 6,67 |
| TE16Z-32 | 32 | 970 | 75 | 70 | 42 x 3,0 | 34 | 65 | 34 | 51 | 57 | 398 | 7,11 |
| TE16Z-34 | 34 | 1095 | 75 | 70 | 45 x 3,0 | 36 | 70 | 36 | 54 | 64 | 410 | 8,85 |
| TE16Z-36 | 36 | 1225 | 80 | 75 | 48 x 3,0 | 39 | 75 | 39 | 58 | 64 | 441 | 9,41 |
| TE16Z-38 | 38 | 1365 | 85 | 80 | 52 x 3,0 | 42 | 80 | 42 | 63 | 70 | 460 | 11,99 |
| TE16Z-40 | 40 | 1510 | 85 | 80 | 52 x 3,0 | 42 | 80 | 42 | 63 | 70 | 479 | 12,09 |
| TE16Z-42 | 42 | 1670 | 90 | 85 | 56 x 4,0 | 45 | 85 | 45 | 68 | 77 | 499 | 15,52 |
| TE16Z-44 | 44 | 1830 | 100 | 95 | 60 x 4,0 | 48 | 85 | 48 | 72 | 90 | 516 | 22,70 |

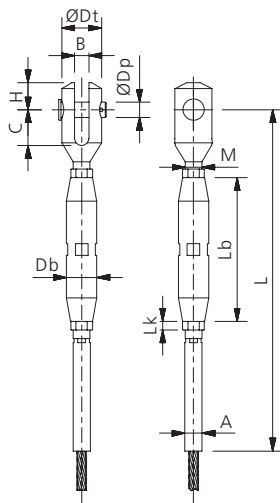
- NOTE: Per assemblaggio strallo e accessori vedi pag. 15.
- REMARK: Socket assembly and handling device see pag. 15.



TENDITORE A PRESSARE CON FORCELLA A TERMINALE TIPO TE21Z
FORK AND SWAGE TERMINAL TURNBUCKLE TE21Z TYPE

Acciaio zincato
Galvanized steel

- Efficienza dell'applicazione il 90% del carico di rottura della fune
- Zincatura a caldo del manicotto e zincatura elettrolitica delle parti filettate
- Controdati di bloccaggio
- Dimensioni senza protezione alla corrosione
- Le dimensioni dopo la pressatura sono solo indicative
- Application efficiency 90% minimum breaking load of the rope
- Hot dip galvanized for the body and electrolytic galvanized for the thread parts
- With lock nuts
- Dimensions without corrosion protection
- After swage dimensions are only indicative



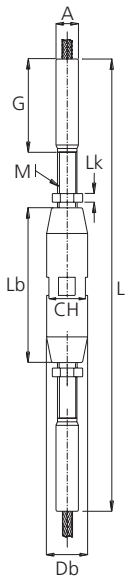
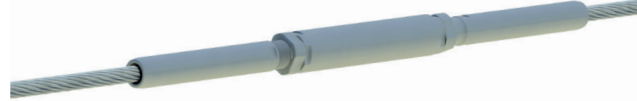
| Codice Code | Fune Rope Ø mm | MBF kN | Perno Pin Ø mm | Dimensioni Dimensions | | | | | | | | Regol. +/- Adj +/- mm | Dopo pressatura After swage | | | Peso Weight kg |
|----------------|-------------------------|-----------|-------------------------|--------------------------|---------|---------|----------|----------|----------|----------|----------|-----------------------------|--------------------------------|--------------|---------------|----------------------|
| | | | | B mm | H mm | C mm | Dt mm | Lb mm | Db mm | M mm | Lk mm | | A mm | L open mm | L close mm | |
| TE21Z-12 | 12 | 129 | 20 | 16 | 33 | 41 | 50 | 158 | 40 | 20 x 2,5 | 10 | 50 | 22 | 482 | 382 | 2,87 |
| TE21Z-14 | 14 | 176 | 23 | 19 | 38 | 48 | 55 | 190 | 47 | 24 x 3,0 | 12 | 60 | 29 | 565 | 445 | 4,62 |
| TE21Z-16 | 16 | 230 | 27 | 23 | 44 | 57 | 65 | 208 | 52 | 27 x 3,0 | 14 | 65 | 29 | 634 | 504 | 6,31 |
| TE21Z-18 | 18 | 295 | 29 | 25 | 47 | 61 | 69 | 226 | 56 | 30 x 3,5 | 15 | 70 | 35 | 687 | 547 | 8,23 |
| TE21Z-20 | 20 | 365 | 32 | 29 | 52 | 69 | 75 | 274 | 61 | 33 x 3,5 | 17 | 80 | 35 | 791 | 631 | 10,90 |
| TE21Z-22 | 22 | 440 | 34 | 30 | 55 | 72 | 80 | 310 | 65 | 36 x 3,0 | 18 | 90 | 38 | 877 | 697 | 13,90 |
| TE21Z-24 | 24 | 535 | 38 | 33 | 61 | 81 | 90 | 326 | 71 | 39 x 3,0 | 20 | 100 | 45 | 948 | 748 | 18,50 |
| TE21Z-26 | 26 | 635 | 42 | 36 | 68 | 90 | 100 | 364 | 77 | 42 x 3,0 | 21 | 100 | 45 | 1027 | 827 | 23,87 |
| TE21Z-28 | 28 | 740 | 44 | 39 | 71 | 95 | 100 | 380 | 82 | 45 x 3,0 | 23 | 110 | 51 | 1086 | 866 | 27,69 |
| TE21Z-30 | 30 | 850 | 48 | 42 | 77 | 102 | 110 | 418 | 86 | 48 x 3,0 | 24 | 110 | 57 | 1157 | 937 | 34,95 |
| TE21Z-32 | 32 | 970 | 52 | 46 | 83 | 110 | 120 | 438 | 92 | 52 x 3,0 | 26 | 120 | 57 | 1238 | 998 | 41,73 |
| TE21Z-34 | 34 | 1095 | 54 | 47 | 86 | 114 | 128 | 472 | 98 | 56 x 4,0 | 28 | 120 | 64 | 1301 | 1061 | 51,56 |
| TE21Z-36 | 36 | 1225 | 58 | 50 | 93 | 122 | 135 | 490 | 104 | 60 x 4,0 | 30 | 130 | 64 | 1379 | 1119 | 59,51 |
| TE21Z-38 | 38 | 1365 | 62 | 53 | 99 | 130 | 145 | 500 | 104 | 60 x 4,0 | 30 | 130 | 70 | 1421 | 1161 | 66,42 |
| TE21Z-40 | 40 | 1510 | 64 | 56 | 102 | 134 | 150 | 520 | 110 | 64 x 4,0 | 32 | 140 | 70 | 1493 | 1213 | 74,33 |
| TE21Z-42 | 42 | 1670 | 68 | 58 | 108 | 141 | 160 | 540 | 116 | 68 x 4,0 | 34 | 140 | 77 | 1547 | 1267 | 89,11 |



TERMINALE A PRESSARE ASTA-ASTA TIPO TE22Z
STUD-STUD SWAGE TERMINAL TE22Z TYPE

Acciaio zincato
Galvanized steel

- Efficienza dell'applicazione il 90% del carico di rottura della fune
- Zincatura a caldo del manicotto e zincatura elettrolitica delle parti filettate
- Controdiadi di bloccaggio
- Dimensioni senza protezione alla corrosione
- Le dimensioni dopo la pressatura sono solo indicative
- Application efficiency 90% minimum breaking load of the rope
- Hot dip galvanized for the body and electrolytic galvanized for the thread parts
- With lock nuts
- Dimensions without corrosion protection
- After swage dimensions are only indicative

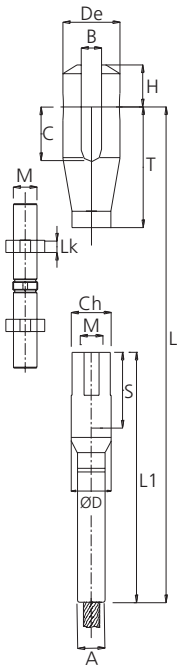
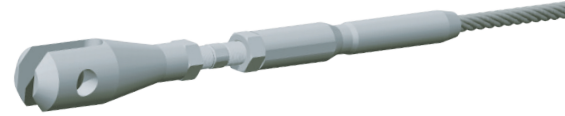


| Codice Code | Fune Rope Ø mm | MBF kN | Dimensioni Dimensions | | | | | Regol. +/- Adj +/- mm | Dopo pressatura After swage | | | Peso Weight kg | |
|----------------|-------------------------|-----------|--------------------------|----------|----------|----------|----------|-----------------------------|--------------------------------|--------------|---------------|----------------------|---------|
| | | | Lb mm | Db mm | M mm | Lk mm | CH mm | | A mm | L open mm | L close mm | | G mm |
| TE22Z-12 | 12 | 129 | 158 | 40 | 20 x 2,5 | 10 | 38 | 50 | 22 | 530 | 430 | 126 | 2,20 |
| TE22Z-14 | 14 | 176 | 190 | 47 | 24 x 3,0 | 12 | 45 | 60 | 29 | 622 | 502 | 144 | 3,80 |
| TE22Z-16 | 16 | 230 | 208 | 52 | 27 x 3,0 | 14 | 50 | 65 | 29 | 691 | 561 | 163 | 4,80 |
| TE22Z-18 | 18 | 295 | 226 | 56 | 30 x 3,5 | 15 | 54 | 70 | 35 | 768 | 628 | 186 | 6,70 |
| TE22Z-20 | 20 | 365 | 254 | 61 | 33 x 3,5 | 17 | 59 | 80 | 35 | 855 | 695 | 204 | 8,30 |
| TE22Z-22 | 22 | 440 | 280 | 65 | 36 x 3,0 | 18 | 63 | 90 | 38 | 950 | 770 | 227 | 10,70 |
| TE22Z-24 | 24 | 535 | 306 | 71 | 39 x 3,0 | 20 | 69 | 100 | 45 | 1039 | 839 | 247 | 14,60 |
| TE22Z-26 | 26 | 635 | 314 | 77 | 42 x 3,0 | 21 | 75 | 100 | 45 | 1088 | 888 | 266 | 16,80 |
| TE22Z-28 | 28 | 740 | 340 | 82 | 45 x 3,0 | 23 | 80 | 110 | 51 | 1173 | 953 | 284 | 21,70 |
| TE22Z-30 | 30 | 850 | 348 | 86 | 48 x 3,0 | 24 | 84 | 110 | 57 | 1224 | 1004 | 304 | 26,20 |
| TE22Z-32 | 32 | 970 | 378 | 92 | 52 x 3,0 | 26 | 90 | 120 | 57 | 1316 | 1076 | 323 | 30,60 |
| TE22Z-34 | 34 | 1.095 | 392 | 98 | 56 x 4,0 | 28 | 96 | 120 | 64 | 1374 | 1134 | 343 | 37,70 |
| TE22Z-36 | 36 | 1.225 | 420 | 104 | 60 x 4,0 | 30 | 102 | 130 | 64 | 1464 | 1204 | 362 | 43,00 |
| TE22Z-38 | 38 | 1.365 | 420 | 104 | 60 x 4,0 | 30 | 102 | 130 | 70 | 1500 | 1240 | 380 | 47,00 |
| TE22Z-40 | 40 | 1.510 | 450 | 110 | 64 x 4,0 | 32 | 108 | 140 | 70 | 1590 | 1310 | 398 | 53,20 |

TENDITORE A FORCELLA CON NIPPO DI REGOLAZIONE TIPO TE23Z
TENDITORE A FORCELLA CON NIPPO DI REGOLAZIONE TIPO TE23Z

Acciaio zincato
Galvanized steel

- Efficienza dell'applicazione il 90% del carico di rottura della fune
- Zincatura a caldo della forcella e del terminale e zincatura elettrolitica delle parti filettate
- Controdadi di bloccaggio
- Dimensioni senza protezione alla corrosione
- Le dimensioni dopo la pressatura sono solo indicative
- Application efficiency 90% minimum breaking load of the rope
- Hot dip galvanized fork and terminal and electrolytic galvanization for the thread parts
- With lock nuts
- Dimensions without corrosion protection
- After swage dimensions are only indicative

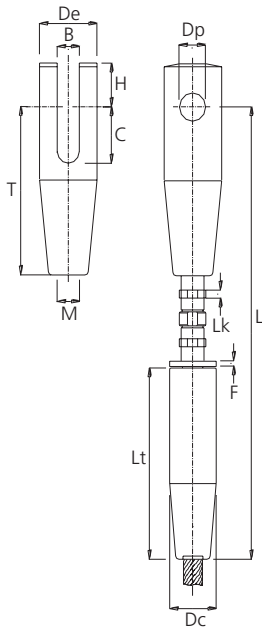
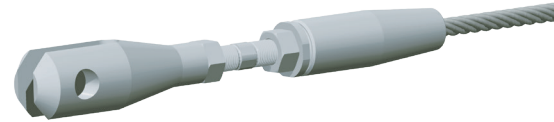


| Codice Code | Fune Rope Ø mm | MBF kN | Perno Pin Ø mm | Dimensioni Dimensions | | | | | | | | | | | Regol. +/- Adj +/- mm | Lunghezza totale Total length | | Peso Weight kg |
|----------------|-------------------------|-----------|-------------------------|--------------------------|---------|----------|---------|----------|---------|----------|---------|----------|---------|----------|-----------------------------|----------------------------------|---------------|----------------------|
| | | | | B mm | H mm | De mm | C mm | Lk mm | T mm | M mm | D mm | Ch mm | A mm | L1 mm | | L open mm | L close mm | |
| TE23Z-12 | 12 | 129 | 20 | 16 | 33 | 50 | 41 | 15 | 107 | 18 x 2,5 | 35 | 27 | 22 | 223 | 50 | 261 | 311 | 1,49 |
| TE23Z-14 | 14 | 176 | 23 | 19 | 38 | 55 | 48 | 16 | 126 | 20 x 2,5 | 38 | 30 | 29 | 254 | 60 | 302 | 362 | 2,25 |
| TE23Z-16 | 16 | 230 | 27 | 22 | 44 | 65 | 57 | 20 | 143 | 24 x 3,0 | 42 | 36 | 29 | 282 | 65 | 341 | 406 | 2,98 |
| TE23Z-18 | 18 | 295 | 29 | 25 | 47 | 69 | 61 | 22 | 155 | 27 x 3,0 | 45 | 41 | 35 | 305 | 70 | 376 | 446 | 3,99 |
| TE23Z-20 | 20 | 365 | 32 | 29 | 52 | 75 | 69 | 24 | 176 | 30 x 3,5 | 50 | 46 | 35 | 345 | 80 | 423 | 503 | 4,86 |
| TE23Z-22 | 22 | 440 | 34 | 30 | 55 | 80 | 72 | 24 | 189 | 30 x 3,5 | 55 | 50 | 38 | 379 | 90 | 457 | 547 | 6,31 |
| TE23Z-24 | 24 | 535 | 38 | 33 | 61 | 90 | 81 | 27 | 211 | 33 x 3,5 | 60 | 55 | 45 | 407 | 100 | 506 | 606 | 8,78 |
| TE23Z-26 | 26 | 635 | 42 | 36 | 68 | 100 | 90 | 29 | 223 | 36 x 3,0 | 60 | 55 | 45 | 426 | 100 | 531 | 631 | 10,15 |
| TE23Z-28 | 28 | 740 | 44 | 39 | 71 | 100 | 95 | 32 | 241 | 39 x 3,0 | 68 | 60 | 51 | 464 | 110 | 576 | 686 | 12,50 |
| TE23Z-30 | 30 | 850 | 48 | 42 | 77 | 110 | 102 | 32 | 253 | 39 x 3,0 | 70 | 60 | 57 | 481 | 115 | 608 | 723 | 16,06 |
| TE23Z-32 | 32 | 970 | 52 | 46 | 83 | 120 | 110 | 34 | 269 | 42 x 3,0 | 75 | 65 | 57 | 513 | 120 | 642 | 762 | 18,89 |
| TE23Z-34 | 34 | 1095 | 54 | 47 | 86 | 128 | 114 | 36 | 276 | 45 x 3,0 | 80 | 70 | 64 | 533 | 120 | 663 | 783 | 23,08 |
| TE23Z-36 | 36 | 1225 | 58 | 50 | 93 | 135 | 122 | 39 | 292 | 48 x 3,0 | 85 | 75 | 64 | 570 | 125 | 697 | 822 | 26,31 |
| TE23Z-38 | 38 | 1365 | 62 | 53 | 99 | 145 | 130 | 40 | 307 | 50 x 3,0 | 90 | 80 | 70 | 592 | 130 | 729 | 859 | 32,47 |
| TE23Z-40 | 40 | 1510 | 64 | 56 | 102 | 150 | 134 | 42 | 313 | 52 x 3,0 | 95 | 80 | 70 | 620 | 130 | 747 | 877 | 35,36 |
| TE23Z-42 | 42 | 1670 | 68 | 58 | 108 | 160 | 141 | 44 | 332 | 54 x 3,0 | 100 | 85 | 77 | 648 | 140 | 794 | 934 | 43,56 |

TENDITORE A FORCELLA CON NIPPOLO DI REGOLAZIONE TE25Z
FORK TURNBUCKLE WITH THREAD ROD FOR REGULATION TE25Z TYPE

Acciaio zincato
Galvanized steel

- Ancoraggio fune mediante zinco e/o resina - EN 13411-4
- Efficienza dell'applicazione il 100% del carico di rottura della fune
- Zincatura a caldo della forcella e del terminale e zincatura elettrolitica delle parti filettate
- Controdati di bloccaggio
- Dimensioni senza protezione alla corrosione
- Anchorage of the rope by molten zinc or polyester resin EN 13411-4
- Application efficiency 100% minimum breaking load of the rope
- Hot dip galvanized fork and terminal and electrolytic galvanization for the thread parts
- With lock nuts
- Dimensions without corrosion protection

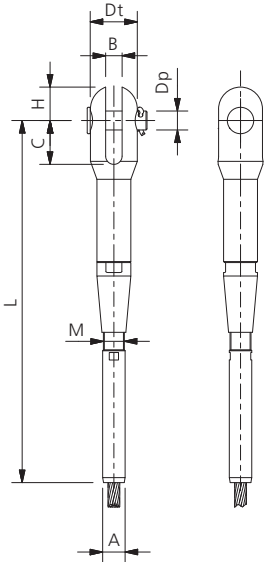


| Codice Code | Fune Rope Ø mm | MBF kN | Dp Ø mm | Dimensioni Dimensions | | | | | | | | | | Regol. +/- Adj +/- mm | Lunghezza totale Total length | | Peso Weight kg |
|----------------|-------------------------|-----------|---------------|--------------------------|---------|----------|---------|----------|---------|----------|---------|----------|----------|-----------------------------|----------------------------------|---------------|----------------------|
| | | | | B mm | H mm | De mm | C mm | Lk mm | T mm | M mm | F mm | Lt mm | Dc mm | | L open mm | L close mm | |
| TE25Z-18 | 18 | 295 | 29 | 25 | 47 | 69 | 61 | 14 | 155 | 27 x 3,0 | 12 | 163 | 56 | 70 | 376 | 446 | 4,80 |
| TE25Z-20 | 20 | 365 | 32 | 29 | 52 | 75 | 69 | 15 | 176 | 30 x 3,5 | 12 | 183 | 60 | 80 | 423 | 503 | 6,10 |
| TE25Z-22 | 22 | 440 | 34 | 30 | 55 | 80 | 72 | 15 | 189 | 30 x 3,5 | 12 | 204 | 66 | 90 | 457 | 547 | 7,50 |
| TE25Z-24 | 24 | 535 | 38 | 33 | 61 | 90 | 81 | 17 | 211 | 33 x 3,5 | 12 | 224 | 72 | 100 | 506 | 606 | 10,30 |
| TE25Z-26 | 26 | 635 | 42 | 36 | 68 | 100 | 90 | 18 | 223 | 36 x 3,0 | 12 | 235 | 78 | 100 | 531 | 631 | 13,20 |
| TE25Z-28 | 28 | 740 | 44 | 39 | 71 | 100 | 95 | 20 | 241 | 39 x 3,0 | 15 | 255 | 84 | 110 | 576 | 686 | 15,60 |
| TE25Z-30 | 30 | 850 | 48 | 42 | 77 | 110 | 102 | 20 | 253 | 39 x 3,0 | 15 | 270 | 90 | 115 | 608 | 723 | 19,10 |
| TE25Z-32 | 32 | 970 | 52 | 46 | 83 | 120 | 110 | 21 | 269 | 42 x 3,0 | 15 | 286 | 96 | 120 | 642 | 762 | 23,50 |
| TE25Z-34 | 34 | 1095 | 54 | 47 | 86 | 128 | 114 | 23 | 276 | 45 x 3,0 | 15 | 296 | 102 | 120 | 663 | 783 | 27,50 |
| TE25Z-36 | 36 | 1225 | 58 | 50 | 93 | 135 | 122 | 24 | 292 | 48 x 3,0 | 15 | 312 | 108 | 125 | 697 | 822 | 32,90 |
| TE25Z-38 | 38 | 1365 | 62 | 53 | 99 | 145 | 130 | 25 | 307 | 50 x 3,0 | 15 | 327 | 114 | 130 | 729 | 859 | 39,00 |
| TE25Z-40 | 40 | 1510 | 64 | 56 | 102 | 150 | 134 | 26 | 313 | 52 x 3,0 | 15 | 337 | 120 | 130 | 747 | 877 | 43,50 |
| TE25Z-42 | 42 | 1670 | 68 | 58 | 108 | 160 | 141 | 27 | 332 | 54 x 3,0 | 15 | 358 | 126 | 140 | 794 | 934 | 51,50 |
| TE25Z-44 | 44 | 1830 | 70 | 61 | 111 | 165 | 146 | 30 | 347 | 60 x 4,0 | 15 | 373 | 132 | 145 | 830 | 975 | 58,60 |
| TE25Z-46 | 46 | 2005 | 74 | 64 | 117 | 170 | 153 | 32 | 358 | 64 x 4,0 | 15 | 384 | 138 | 145 | 856 | 1001 | 65,90 |
| TE25Z-48 | 48 | 2180 | 78 | 67 | 124 | 178 | 162 | 34 | 376 | 68 x 4,0 | 15 | 399 | 144 | 150 | 893 | 1043 | 75,70 |
| TE25Z-52 | 52 | 2560 | 78 | 72 | 124 | 197 | 165 | 35 | 381 | 70 x 4,0 | 15 | 420 | 156 | 150 | 921 | 1071 | 91,30 |
| TE25Z-54 | 54 | 2765 | 78 | 75 | 124 | 205 | 168 | 36 | 396 | 72 x 4,0 | 15 | 440 | 162 | 160 | 963 | 1123 | - |
| TE25Z-56 | 56 | 2970 | 78 | 78 | 124 | 212 | 174 | 38 | 405 | 75 x 4,0 | 15 | 451 | 168 | 160 | 987 | 1147 | - |
| TE25Z-60 | 60 | 3400 | 78 | 84 | 124 | 228 | 186 | 40 | 432 | 80 x 4,0 | 15 | 481 | 180 | 170 | 1048 | 1218 | - |

TERMINALE A PRESSARE A FORCELLA CON REGOLAZIONE TIPO TE31Z
SWAGE FORK TERMINAL WITH ADJUSTMENT TE31Z TYPE

Acciaio zincato elettrolitico
Electrolytic galvanized steel

- Efficienza dell'applicazione il 90% del carico di rottura della fune
- Controdadi di bloccaggio
- Dimensioni senza protezione alla corrosione
- Le dimensioni dopo la pressatura sono solo indicative
- Application efficiency 90% minimum breaking load of the rope
- With lock nuts
- Dimensions without corrosion protection
- After swage dimensions are only indicative



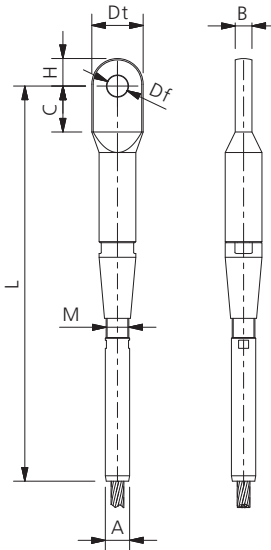
| Destro Right | Codice Code | Sinistro Left | Fune Rope | MBF kN | Dimensioni Dimensions | | | | | | | Dopo pressatura After swage | | |
|-----------------|----------------|------------------|--------------|-----------|--------------------------|---------|---------|----------|---------|---------|-----------|--------------------------------|--------------|---------------|
| | | | | | Dp mm | B mm | H mm | Dt mm | C mm | M mm | Adj mm | A mm | L open mm | L close mm |
| TE31Z-10R | | TE31Z-10L | 10 | 85 | 18 | 15 | 27 | 40 | 35 | 18 | 50 | 17 | 314 | 264 |
| TE31Z-12R | | TE31Z-12L | 12 | 129 | 20 | 16 | 33 | 50 | 41 | 20 | 65 | 22 | 381 | 316 |
| TE31Z-14R | | TE31Z-14L | 14 | 176 | 23 | 19 | 38 | 55 | 48 | 24 | 75 | 29 | 435 | 360 |
| TE31Z-16R | | TE31Z-16L | 16 | 230 | 27 | 23 | 44 | 65 | 57 | 27 | 75 | 29 | 476 | 401 |
| TE31Z-18R | | TE31Z-18L | 18 | 295 | 29 | 25 | 47 | 69 | 61 | 30 | 90 | 35 | 549 | 459 |
| TE31Z-20R | | TE31Z-20L | 20 | 365 | 32 | 29 | 52 | 75 | 69 | 33 | 90 | 35 | 568 | 478 |
| TE31Z-22R | | TE31Z-22L | 22 | 440 | 34 | 30 | 55 | 80 | 72 | 36 | 105 | 38 | 629 | 524 |
| TE31Z-24R | | TE31Z-24L | 24 | 535 | 38 | 33 | 61 | 90 | 81 | 39 | 110 | 45 | 669 | 559 |
| TE31Z-26R | | TE31Z-26L | 26 | 635 | 42 | 36 | 68 | 100 | 90 | 42 | 110 | 45 | 706 | 596 |
| TE31Z-28R | | TE31Z-28L | 28 | 740 | 44 | 39 | 71 | 100 | 95 | 45 | 120 | 51 | 754 | 634 |
| TE31Z-30R | | TE31Z-30L | 30 | 850 | 48 | 42 | 77 | 110 | 102 | 48 | 130 | 57 | 816 | 686 |
| TE31Z-32R | | TE31Z-32L | 32 | 970 | 52 | 46 | 83 | 120 | 110 | 52 | 135 | 57 | 866 | 731 |
| TE31Z-34R | | TE31Z-34L | 34 | 1095 | 54 | 47 | 86 | 128 | 114 | 56 | 135 | 64 | 894 | 759 |
| TE31Z-36R | | TE31Z-36L | 36 | 1225 | 58 | 50 | 93 | 135 | 122 | 60 | 140 | 64 | 942 | 802 |



TERMINALE A PRESSARE AD OCCHIO CON REGOLAZIONE TIPO TE32Z
SWAGE EYE TERMINAL WITH ADJUSTMENT TE32Z TYPE

Acciaio zincato elettrolitico
Electrolytic galvanized steel

- Efficienza dell'applicazione il 90% del carico di rottura della fune
- Controdadi di bloccaggio
- Dimensioni senza protezione alla corrosione
- Le dimensioni dopo la pressatura sono solo indicative
- Application efficiency 90% minimum breaking load of the rope
- With lock nuts
- Dimensions without corrosion protection
- After swage dimensions are only indicative



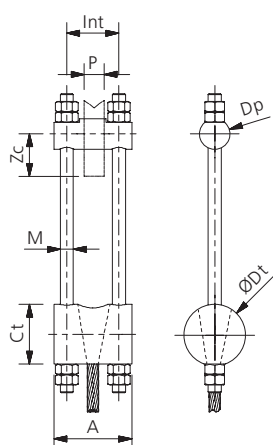
| Destro Right | Codice Code | Sinistro Left | Fune Rope | MBF kN | Dimensioni Dimensions | | | | | | | Dopo pressatura After swage | | |
|-----------------|----------------|------------------|--------------|-----------|--------------------------|---------|---------|----------|---------|---------|-----------|--------------------------------|--------------|---------------|
| | | | | | Df mm | B mm | H mm | Dt mm | C mm | M mm | Adj mm | A mm | L open mm | L close mm |
| TE32Z-10R | TE32Z-10L | 10 | 85 | 17 | 13,0 | 24 | 39 | 36 | 18 | 50 | 17 | 325 | 275 | |
| TE32Z-12R | TE32Z-12L | 12 | 129 | 21 | 16,0 | 31 | 48 | 44 | 20 | 65 | 22 | 381 | 316 | |
| TE32Z-14R | TE32Z-14L | 14 | 176 | 24 | 19,0 | 35 | 56 | 51 | 24 | 75 | 29 | 436 | 361 | |
| TE32Z-16R | TE32Z-16L | 16 | 230 | 28 | 21,0 | 41 | 65 | 60 | 27 | 75 | 29 | 473 | 398 | |
| TE32Z-18R | TE32Z-18L | 18 | 295 | 30 | 26,5 | 44 | 70 | 67 | 30 | 90 | 35 | 543 | 453 | |
| TE32Z-20R | TE32Z-20L | 20 | 365 | 33 | 26,5 | 48 | 75 | 73 | 33 | 90 | 35 | 565 | 75 | |
| TE32Z-22R | TE32Z-22L | 22 | 440 | 35 | 26,5 | 53 | 83 | 77 | 36 | 105 | 38 | 631 | 526 | |
| TE32Z-24R | TE32Z-24L | 24 | 535 | 39 | 26,5 | 53 | 83 | 80 | 39 | 110 | 45 | 662 | 552 | |
| TE32Z-26R | TE32Z-26L | 26 | 635 | 43 | 31,0 | 61 | 95 | 88 | 42 | 110 | 45 | 701 | 591 | |
| TE32Z-28R | TE32Z-28L | 28 | 740 | 45 | 31,0 | 64 | 100 | 93 | 45 | 120 | 51 | 750 | 630 | |
| TE32Z-30R | TE32Z-30L | 30 | 850 | 49 | 36,0 | 72 | 112 | 103 | 45 | 130 | 57 | 812 | 682 | |
| TE32Z-32R | TE32Z-32L | 32 | 970 | 53 | 42,0 | 76 | 119 | 113 | 48 | 135 | 57 | 857 | 722 | |
| TE32Z-34R | TE32Z-34L | 34 | 1095 | 55 | 42,0 | 82 | 129 | 118 | 52 | 135 | 64 | 890 | 755 | |
| TE32Z-36R | TE32Z-36L | 36 | 1225 | 59 | 47,0 | 87 | 129 | 128 | 56 | 140 | 64 | 926 | 786 | |


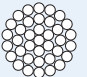


CAPOCORDA A PONTE CHIUSO TIPO TE41Z
CLOSED BRIDGE SOCKET TE41Z TYPE

Acciaio zincato
Galvanized steel

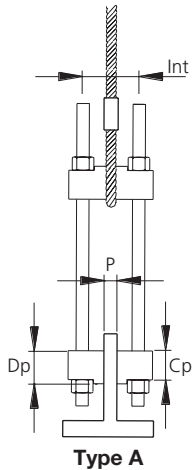
- Lunghezza massima barre filettate 3 m
- Ancoraggio fune mediante zinco e/o resina - EN 13411-4
- Efficienza dell'applicazione il 100% del carico di rottura della fune
- Controdati di bloccaggio
- Dimensioni senza protezione alla corrosione
- Maximum length thread bar 3 m
- Anchorage of the rope by molten zinc or polyester resin EN 13411-4
- Application efficiency 100% minimum breaking load of the rope
- With lock nuts
- Dimensions without corrosion protection



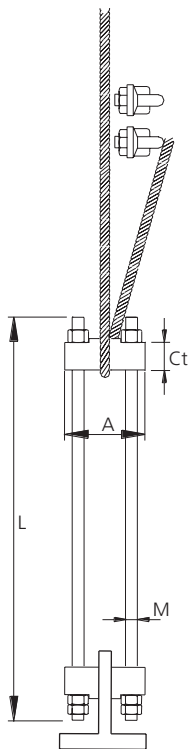
| Codice Code |  Fune trefoli Wire rope | |  Fune spiroidale Structural strand | | Carico di rottura capocorda Socket breaking force | | Dimensioni Dimensions | | | | Piatto ancoraggio Anchoring lug | | | Barra filettata Thread bar |
|----------------|---|---------|--|-------|--|---------|--------------------------|----------|------------------|-----|------------------------------------|-------------|--|----------------------------------|
| | Ø mm | Ø mm | kN | t | Int mm | A mm | Ct mm | Dp mm | P= Lug Thk mm | | Zc mm | M x p mm | | |
| | | | | | | | | | Min | Max | | | | |
| TE41Z-14 | 14-16 | 14-15 | 235 | 22,9 | 62 | 95 | 84 | 34 | 20 | 30 | 54 | 16 x 2,0 | | |
| TE41Z-16 | 18-19 | 16 | 286 | 28,5 | 70 | 106 | 92 | 40 | 24 | 34 | 63 | 18 x 2,5 | | |
| TE41Z-18 | 20 | 18-19 | 368 | 35,6 | 76 | 116 | 102 | 45 | 26 | 36 | 71 | 20 x 2,5 | | |
| TE41Z-20 | 22 | 20 | 459 | 43,8 | 85 | 129 | 105 | 48 | 31 | 41 | 75 | 22 x 2,5 | | |
| TE41Z-22 | 24 | 22 | 530 | 50,9 | 94 | 141 | 114 | 50 | 36 | 46 | 78 | 24 x 3,0 | | |
| TE41Z-24 | 26 | 24 | 695 | 63,2 | 102 | 156 | 120 | 57 | 36 | 50 | 89 | 27 x 3,0 | | |
| TE41Z-26 | 28 | 26 | 695 | 67,2 | 109 | 163 | 134 | 60 | 43 | 53 | 94 | 27 x 3,0 | | |
| TE41Z-28 | 30 | 28 | 846 | 82,5 | 117 | 177 | 143 | 68 | 45 | 57 | 107 | 30 x 3,5 | | |
| TE41Z-30 | 32-34 | 30 | 1056 | 96,8 | 126 | 191 | 153 | 70 | 48 | 62 | 110 | 33 x 3,5 | | |
| TE41Z-32 | 36 | 32 | 1056 | 104,9 | 132 | 197 | 164 | 72 | 54 | 64 | 113 | 33 x 3,5 | | |
| TE41Z-34 | 38 | 34 | 1340 | 126,4 | 144 | 215 | 173 | 76 | 58 | 72 | 117 | 36 x 3,0 | | |
| TE41Z-36 | 40 | 36 | 1340 | 133,5 | 148 | 219 | 183 | 80 | 62 | 72 | 125 | 36 x 3,0 | | |
| TE41Z-38 | 42 | 38 | 1600 | 147,8 | 156 | 232 | 193 | 84 | 64 | 76 | 132 | 39 x 3,0 | | |
| TE41Z-40 | 44 | 40 | 1600 | 156,9 | 162 | 238 | 203 | 85 | 70 | 78 | 133 | 39 x 3,0 | | |
| TE41Z-42 | 46-48 | 42 | 1880 | 188,5 | 172 | 253 | 213 | 90 | 74 | 84 | 141 | 42 x 3,0 | | |
| TE41Z-44 | 50 | 44 | 2190 | 196,7 | 180 | 269 | 222 | 97 | 74 | 88 | 152 | 45 x 3,0 | | |
| TE41Z-46 | 52 | 46 | 2190 | 214,0 | 186 | 275 | 232 | 100 | 80 | 90 | 156 | 45 x 3,0 | | |
| TE41Z-48 | 54 | 48 | 2510 | 234,4 | 196 | 290 | 242 | 108 | 84 | 96 | 169 | 48 x 3,0 | | |
| TE41Z-50 | 56-58 | 50 | 2510 | 258,9 | 201 | 295 | 252 | 110 | 89 | 97 | 172 | 48 x 3,0 | | |
| TE41Z-52 | 60 | 52 | 2990 | 275,2 | 212 | 313 | 262 | 118 | 92 | 104 | 185 | 52 x 3,0 | | |
| TE41Z-54 | 62 | 54 | 2990 | 295,6 | 214 | 315 | 272 | 120 | 94 | 102 | 188 | 52 x 3,0 | | |
| TE41Z-56 | 64 | 56 | 3350 | 305,8 | 220 | 325 | 282 | 124 | 96 | 104 | 194 | 56 x 4,0 | | |
| TE41Z-58 | | 58 | 3350 | 341,4 | 227 | 335 | 292 | 128 | 99 | 107 | 200 | 56 x 4,0 | | |
| TE41Z-60 | | 60 | 3890 | 377,1 | 237 | 353 | 301 | 130 | 101 | 113 | 203 | 60 x 4,0 | | |
| TE41Z-62 | | 62 | 3890 | 387,3 | 239 | 351 | 319 | 132 | 102 | 107 | 206 | 60 x 4,0 | | |
| TE41Z-64 | | 64 | 4400 | 417,9 | 250 | 369 | 329 | 138 | 105 | 114 | 214 | 64 x 4,0 | | |

CAPOCORDA A PONTE PER FUNE A TREFOLI TIPO TE43Z
BRIDGE SOCKET FOR FLEXIBLE WIRE ROPE TE43Z TYPE

Acciaio zincato
Galvanized steel

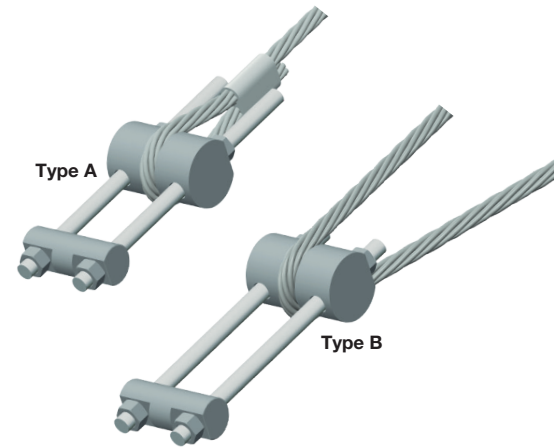


Type A



Type B

- Lunghezza massima barre filettate 3 m
- Ancoraggio fune ed efficienza:
 - Tipo "A"** - Applicazione mediante pressatura EN13411-3
Efficienza: 90% del carico di rottura della fune
 - Tipo "B"** - Applicazione con morsetti a cavalletto EN13411-5
Efficienza: 80% del carico di rottura della fune
- Controdadi di bloccaggio
- Dimensioni senza protezione
- Maximum length thread bar 3 m
- Rope connection and efficiency:
 - Type "A"** - Swaging application EN13411-3
Efficiency: 90% of the minimum breaking load of the rope
 - Type "B"** - Application with wire rope grips EN13411-5
Efficiency: 80% of the minimum breaking load of the rope
- With lock nuts
- Dimensions without protection

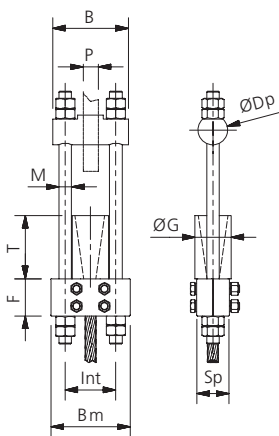
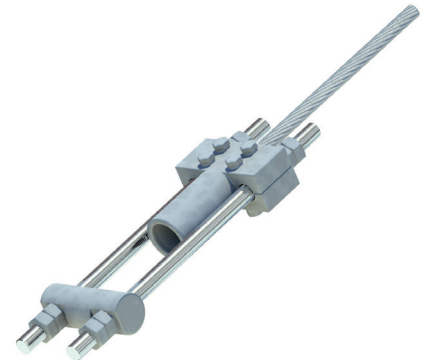


| Codice Code | Fune Rope Ø mm | Capocorda Socket MBF kN | Dimensioni Dimensions | | | | | Spessore piatto Plate thickness | | Barra filettata Thread bar M x p | Tipo B Type B Morsetti cavalletto EN 13411-5 Wire rope clips EN 13411-5 Coppia serraggio Tighten force | |
|----------------|-----------------------------|--------------------------------------|--------------------------|---------|----------|----------|----------|------------------------------------|-------|--|---|------|
| | | | Int mm | A mm | Ct mm | Cp mm | Dp mm | P Min | P Max | | Nr. | N.m |
| TE43Z-12 | 12 | 129 | 55 | 84 | 42 | 24 | 30 | 17 | 23 | 14 x 2,0 | 3 | 88 |
| TE43Z-14 | 14 | 176 | 62 | 95 | 50 | 27 | 34 | 20 | 30 | 16 x 2,0 | 3 | 129 |
| TE43Z-16 | 16 | 230 | 70 | 106 | 57 | 33 | 40 | 24 | 34 | 18 x 2,5 | 3 | 129 |
| TE43Z-18 | 18 | 295 | 75 | 115 | 65 | 37 | 45 | 25 | 36 | 20 x 2,5 | 4 | 176 |
| TE43Z-20 | 20 | 365 | 83 | 127 | 72 | 39 | 48 | 29 | 41 | 22 x 2,5 | 4 | 176 |
| TE43Z-22 | 22 | 440 | 92 | 136 | 85 | 40 | 50 | 38 | 46 | 22 x 2,5 | 4 | 305 |
| TE43Z-24 | 24 | 535 | 100 | 149 | 92 | 46 | 57 | 40 | 50 | 24 x 3,0 | 5 | 305 |
| TE43Z-26 | 26 | 635 | 109 | 163 | 97 | 50 | 60 | 43 | 53 | 27 x 3,0 | 5 | 305 |
| TE43Z-28 | 28 | 740 | 117 | 177 | 103 | 57 | 68 | 45 | 57 | 30 x 3,5 | 6 | 305 |
| TE43Z-30 | 30 | 850 | 121 | 181 | 111 | 56 | 70 | 49 | 62 | 30 x 3,5 | 6 | 305 |
| TE43Z-32 | 32 | 970 | 132 | 197 | 122 | 59 | 72 | 54 | 64 | 33 x 3,5 | 7 | 488 |
| TE43Z-34 | 34 | 1095 | 138 | 203 | 129 | 60 | 75 | 58 | 72 | 33 x 3,5 | 7 | 488 |
| TE43Z-36 | 36 | 1225 | 148 | 219 | 135 | 66 | 80 | 62 | 72 | 36 x 3,0 | 7 | 488 |
| TE43Z-38 | 38 | 1365 | 154 | 225 | 143 | 68 | 84 | 68 | 76 | 36 x 3,0 | 8 | 488 |
| TE43Z-40 | 40 | 1510 | 162 | 238 | 148 | 72 | 85 | 70 | 78 | 39 x 3,0 | 8 | 488 |
| TE43Z-42 | 42 | 1670 | 168 | 244 | 161 | 73 | 90 | 76 | 84 | 39 x 3,0 | 8 | 583 |
| TE43Z-44 | 44 | 1830 | 178 | 261 | 167 | 79 | 97 | 78 | 88 | 42 x 3,0 | 8 | 583 |
| TE43Z-46 | 46 | 2005 | 186 | 275 | 173 | 83 | 100 | 80 | 90 | 45 x 3,0 | 8 | 583 |
| TE43Z-48 | 48 | 2180 | 196 | 290 | 178 | 90 | 108 | 84 | 96 | 48 x 3,0 | 8 | 1017 |
| TE43Z-50 | 50 | 2370 | 201 | 295 | 186 | 93 | 110 | 89 | 97 | 48 x 3,0 | 8 | 1017 |
| TE43Z-52 | 52 | 2560 | 212 | 313 | 196 | 99 | 118 | 92 | 104 | 52 x 3,0 | 8 | 1017 |
| TE43Z-54 | 54 | 2765 | 214 | 315 | 204 | 101 | 120 | 94 | 102 | 52 x 3,0 | 8 | 1017 |

CAPOCORDA A PONTE APERTO CON MORSETTI TIPO TE44Z
OPEN BRIDGE SOCKET WITH CLAMP TE44Z TYPE

Acciaio zincato
Galvanized steel

- Lunghezza massima barre filettate 3 m
- Ancoraggio fune mediante zinco e/o resina - EN 13411-4
- Efficienza dell'applicazione il 100% del carico di rottura della fune
- Controdadi di bloccaggio
- Dimensioni senza protezione alla corrosione
- Maximum length thread bar 3 m
- Anchorage of the rope by molten zinc or polyester resin EN 13411-4
- Application efficiency 100% minimum breaking load of the rope
- With lock nuts
- Dimensions without corrosion protection

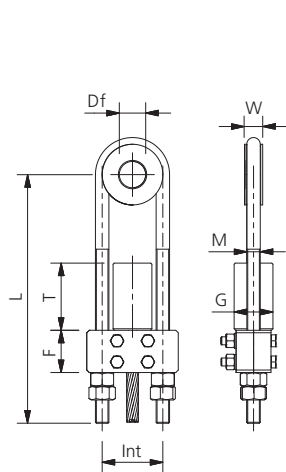


| Codice Code | Fune trefoli Wire rope | Fune spiroidale Structural strand | Carico di rottura capocorda Socket breaking force | | Dimensioni Dimensions | | | | | | | | | | Spessore piatto Plate thickness | | Barra filettata Thread bar |
|----------------|---------------------------------|--|--|-------|--------------------------|-----|-----------|----------|---------|---------|---------|----------|---------|---------|--|----------|-------------------------------------|
| | | | Ø mm | Ø mm | kN | t | Int mm | Dp mm | C mm | B mm | F mm | Bm mm | T mm | G mm | Sp mm | P Min | P Max |
| TE44Z-14 | 14-16 | 14-15 | 225 | 22,9 | 62 | 34 | 27 | 95 | 54 | 98 | 72 | 42 | 40 | 20 | 30 | 16 x 2,0 | |
| TE44Z-16 | 18-19 | 16 | 280 | 28,5 | 70 | 40 | 33 | 106 | 58 | 110 | 82 | 48 | 40 | 24 | 34 | 18 x 2,5 | |
| TE44Z-18 | 20 | 18-19 | 350 | 35,7 | 76 | 45 | 37 | 116 | 58 | 120 | 92 | 54 | 50 | 26 | 36 | 20 x 2,5 | |
| TE44Z-20 | 22 | 20 | 430 | 43,8 | 85 | 48 | 39 | 129 | 69 | 133 | 103 | 60 | 50 | 31 | 41 | 22 x 2,5 | |
| TE44Z-22 | 24 | 22 | 500 | 51,0 | 94 | 50 | 40 | 141 | 69 | 146 | 113 | 66 | 60 | 36 | 46 | 24 x 3,0 | |
| TE44Z-24 | 26 | 24 | 620 | 63,2 | 102 | 57 | 46 | 156 | 80 | 160 | 123 | 72 | 60 | 6 | 50 | 27 x 3,0 | |
| TE44Z-26 | 28 | 26 | 660 | 67,3 | 109 | 60 | 50 | 163 | 80 | 167 | 133 | 78 | 70 | 43 | 53 | 27 x 3,0 | |
| TE44Z-28 | 30 | 28 | 810 | 82,6 | 117 | 68 | 57 | 177 | 80 | 181 | 144 | 84 | 70 | 45 | 57 | 30 x 3,5 | |
| TE44Z-30 | 32-34 | 30 | 950 | 96,8 | 126 | 70 | 56 | 191 | 90 | 196 | 154 | 90 | 70 | 48 | 62 | 33 x 3,5 | |
| TE44Z-32 | 36 | 32 | 1030 | 105,0 | 132 | 72 | 59 | 197 | 92 | 202 | 164 | 96 | 80 | 54 | 64 | 33 x 3,5 | |
| TE44Z-34 | 38 | 34 | 1240 | 126,4 | 144 | 75 | 60 | 215 | 92 | 220 | 174 | 102 | 80 | 58 | 72 | 36 x 3,0 | |
| TE44Z-36 | 40 | 36 | 1310 | 133,5 | 148 | 80 | 66 | 219 | 92 | 224 | 184 | 108 | 80 | 62 | 72 | 36 x 3,0 | |
| TE44Z-38 | 42 | 38 | 1450 | 147,8 | 156 | 84 | 68 | 232 | 102 | 238 | 195 | 114 | 90 | 64 | 76 | 39 x 3,0 | |
| TE44Z-40 | 44 | 40 | 1540 | 157,0 | 162 | 85 | 72 | 238 | 102 | 244 | 205 | 120 | 90 | 70 | 78 | 39 x 3,0 | |
| TE44Z-42 | 46-48 | 42 | 1850 | 188,6 | 172 | 90 | 73 | 253 | 112 | 260 | 215 | 126 | 100 | 74 | 84 | 42 x 3,0 | |
| TE44Z-44 | 50 | 44 | 1930 | 196,7 | 180 | 97 | 79 | 269 | 112 | 274 | 225 | 132 | 100 | 74 | 88 | 45 x 3,0 | |
| TE44Z-46 | 52 | 46 | 2100 | 214,1 | 186 | 100 | 83 | 275 | 123 | 280 | 236 | 138 | 110 | 80 | 90 | 45 x 3,0 | |
| TE44Z-48 | 54 | 48 | 2300 | 234,5 | 196 | 108 | 90 | 290 | 123 | 296 | 246 | 144 | 110 | 84 | 96 | 48 x 3,0 | |
| TE44Z-50 | 56-58 | 50 | 2540 | 258,9 | 201 | 110 | 93 | 295 | 134 | 301 | 256 | 150 | 120 | 89 | 97 | 48 x 3,0 | |
| TE44Z-52 | 60 | 52 | 2700 | 275,2 | 212 | 118 | 99 | 313 | 134 | 320 | 266 | 156 | 120 | 92 | 104 | 52 x 3,0 | |
| TE44Z-54 | 62 | 54 | 2900 | 295,6 | 214 | 120 | 101 | 315 | 134 | 322 | 276 | 162 | 120 | 94 | 102 | 52 x 3,0 | |
| TE44Z-56 | 64 | 56 | 3000 | 305,8 | 220 | 124 | 105 | 325 | 145 | 332 | 287 | 168 | 130 | 96 | 104 | 54 x 4,0 | |
| TE44Z-58 | | 58 | 3350 | 341,5 | 227 | 128 | 108 | 335 | 145 | 343 | 297 | 174 | 130 | 99 | 107 | 56 x 4,0 | |
| TE44Z-60 | | 60 | 3700 | 377,2 | 237 | 130 | 107 | 353 | 156 | 361 | 307 | 180 | 130 | 102 | 107 | 60 x 4,0 | |

CAPOCORDA A PONTE CON FORCELLA TIPO TE45Z
U-BOLT BRIDGE SOCKET TE45Z TYPE

Acciaio zincato
Galvanized steel

- Ancoraggio fune mediante zinco e/o resina - EN 13411-4
- Efficienza dell'applicazione il 100% del carico di rottura della fune
- Controdati di bloccaggio
- Dimensioni senza protezione alla corrosione
- Anchorage of the rope by molten zinc or polyester resin EN 13411-4
- Application efficiency 100% minimum breaking load of the rope
- With lock nuts
- Dimensions without corrosion protection

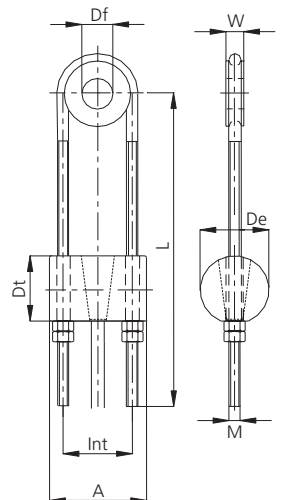


| Codice Code | Fune trefoli Wire rope | Fune spiroidale Structural strand | Carico di rottura capocorda Socket breaking force | | Dimensioni Dimensions | | | | | | | | | | Forcella filettata Threaded U-Rod |
|----------------|---------------------------------|--|---|-------|--------------------------|----------|----------|----------|---------|----------|---------|---------|---------|---------|--|
| | | | kN | t | Int mm | Sp mm | Df mm | Bm mm | F mm | Sp mm | T mm | G mm | W mm | L mm | |
| TE45Z-14 | 14-16 | 14-15 | 225 | 22,9 | 62 | 40 | 37 | 98 | 54 | 40 | 72 | 42 | 24 | 635 | 16 x 2,0 |
| TE45Z-16 | 18-19 | 16 | 280 | 28,5 | 70 | 40 | 37 | 110 | 58 | 40 | 82 | 48 | 26 | 650 | 18 x 2,5 |
| TE45Z-18 | 20 | 18-19 | 350 | 35,7 | 76 | 50 | 43 | 120 | 58 | 50 | 92 | 54 | 28 | 700 | 20 x 2,5 |
| TE45Z-20 | 22 | 20 | 430 | 43,8 | 85 | 50 | 53 | 133 | 69 | 50 | 103 | 60 | 30 | 750 | 22 x 2,5 |
| TE45Z-22 | 24 | 22 | 50 | 51,0 | 94 | 60 | 54 | 146 | 69 | 60 | 113 | 66 | 32 | 900 | 24 x 3,0 |
| TE45Z-24 | 26 | 24 | 620 | 63,2 | 102 | 60 | 60 | 160 | 80 | 60 | 123 | 72 | 35 | 1200 | 27 x 3,0 |
| TE45Z-26 | 28 | 26 | 660 | 67,3 | 109 | 70 | 60 | 167 | 80 | 70 | 133 | 78 | 35 | 1200 | 27 x 3,0 |
| TE45Z-28 | 30 | 28 | 810 | 82,6 | 117 | 70 | 66 | 181 | 80 | 70 | 144 | 84 | 38 | 1300 | 30 x 3,5 |
| TE45Z-30 | 32-34 | 30 | 950 | 96,8 | 126 | 70 | 73 | 196 | 90 | 70 | 154 | 90 | 41 | 1400 | 33 x 3,5 |
| TE45Z-32 | 36 | 32 | 1030 | 105,0 | 132 | 80 | 73 | 202 | 92 | 80 | 164 | 96 | 41 | 1500 | 33 x 3,5 |
| TE45Z-34 | 38 | 34 | 1240 | 126,4 | 144 | 80 | 79 | 220 | 92 | 80 | 174 | 102 | 44 | 1600 | 36 x 3,0 |
| TE45Z-36 | 40 | 36 | 1310 | 133,5 | 148 | 80 | 92 | 224 | 92 | 80 | 184 | 108 | 44 | 1800 | 36 x 3,0 |

CAPOCORDA A PONTE APERTO CON MORSETTI TIPO TE46Z
OPEN BRIDGE SOCKET WITH CILINDRICAL SOCKET TE46Z TYPE

Acciaio zincato
Galvanized steel

- Ancoraggio fune mediante zinco e/o resina - EN 13411-4
- Efficienza dell'applicazione il 100% del carico di rottura della fune
- Controdati di bloccaggio
- Dimensioni senza protezione alla corrosione
- Anchorage of the rope by molten zinc or polyester resin EN 13411-4
- Application efficiency 100% minimum breaking load of the rope
- With slock nuts
- Dimensions without corrosion protection

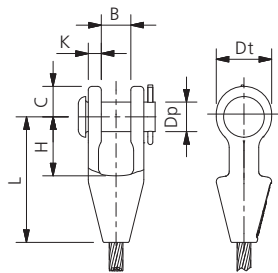
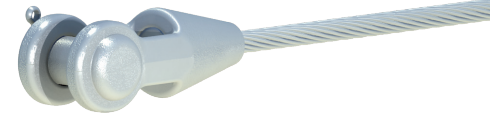


| Codice Code | Fune trefoli Wire rope | Fune spiroidale Structural strand | Carico di rottura capocorda Socket breaking force | | Dimensioni Dimensions | | | | | | | Forcella filettata Threaded U-Rod | Peso Weight |
|----------------|---------------------------------|--|---|-------|--------------------------|---------|----------|----------|----------|---------|---------|--|----------------|
| | | | kN | t | Int mm | A mm | Dt mm | De mm | Df mm | W mm | L mm | | |
| TE46Z-24 | 26 | 24 | 620 | 63,2 | 102 | 156 | 120 | 125 | 60 | 35 | 1200 | 27 x 3,0 | 36,2 |
| TE46Z-26 | 28 | 26 | 660 | 67,3 | 109 | 163 | 134 | 138 | 60 | 35 | 1200 | 27 x 3,0 | 40,9 |
| TE46Z-28 | 30 | 28 | 810 | 82,6 | 117 | 177 | 143 | 148 | 66 | 38 | 1300 | 30 x 3,5 | 49,9 |
| TE46Z-30 | 32-34 | 30 | 950 | 96,8 | 126 | 191 | 153 | 159 | 73 | 41 | 1400 | 33 x 3,5 | 60,9 |
| TE46Z-32 | 36 | 32 | 1030 | 105,0 | 132 | 197 | 164 | 169 | 73 | 41 | 1500 | 33 x 3,5 | 68,0 |
| TE46Z-34 | 38 | 34 | 1240 | 126,4 | 144 | 215 | 173 | 179 | 79 | 44 | 1600 | 36 x 3,0 | 82,4 |
| TE46Z-36 | 40 | 36 | 1310 | 133,5 | 148 | 219 | 183 | 189 | 92 | 44 | 1800 | 36 x 3,0 | 92,3 |

CAPOCORDA TESTA FUSA APERTO TIPO TE51Z
OPEN SPELTER SOCKET TE51Z TYPE

Acciaio zincato a caldo
Hot dip galvanized steel

- Applicazione fune mediante zinco e/o resina EN 13411-4
- Efficienza dell'applicazione il 100% del carico di rottura della fune
- Dimensioni senza protezione alla corrosione
- Anchorage of the rope by molten zinc or polyester resin EN 13411-4
- Application efficiency 100% minimum breaking load of the rope
- Dimensions without corrosion protection



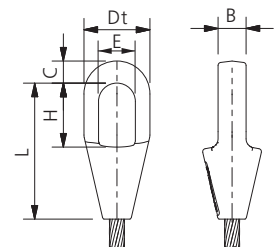
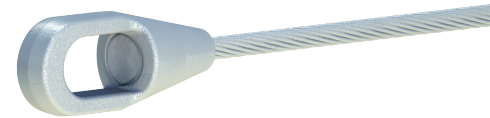
| Codice Code | Fune trefoli Wire rope | | Fune spiroidale Structural strand | MBF | | Dimensioni Dimensions | | | | | | Peso Weight | |
|----------------|---------------------------|---------------|--------------------------------------|------|-----|--------------------------|---------|----------|----------|---------|---------|----------------|--------|
| | Ø mm | Ø inch | Ø mm | kN | ton | L mm | H mm | Dt mm | Dp mm | B mm | C mm | K mm | kg |
| ASKTA-10 | 8-10 | 5/16 - 3/8 | - | 117 | 12 | 101 | 44 | 42 | 21 | 21 | 23 | 11 | 0,80 |
| ASKTA-13 | 11-13 | 7/16 - 1/2 | - | 196 | 20 | 114 | 49 | 50 | 25 | 26 | 29 | 12 | 1,00 |
| ASKTA-16 | 14-16 | 9/16 - 5/8 | 11-13 | 245 | 25 | 141 | 64 | 58 | 30 | 33 | 31 | 14 | 1,80 |
| ASKTA-19 | 18-19 | 3/4 | 14-16 | 392 | 40 | 164 | 75 | 70 | 35 | 38 | 41 | 16 | 3,00 |
| ASKTA-22 | 20-22 | 7/8 | 18-19 | 539 | 55 | 189 | 88 | 80 | 41 | 44 | 46 | 19 | 4,60 |
| ASKTA-26 | 23-26 | 1 | 20-22 | 735 | 75 | 214 | 100 | 104 | 51 | 51 | 61 | 22 | 8,00 |
| ASKTA-30 | 27-30 | 1.1/8 | 23-26 | 882 | 90 | 240 | 113 | 114 | 57 | 57 | 66 | 25 | 11,00 |
| ASKTA-35 | 31-35 | 1.1/4 - 1.3/8 | 28 | 1226 | 125 | 265 | 126 | 126 | 63 | 63 | 73 | 28 | 16,00 |
| ASKTA-38 | 36-39 | 1.1/2 | 30-32 | 1471 | 150 | 314 | 162 | 142 | 70 | 76 | 80 | 30 | 23,00 |
| ASKTA-42 | 40-42 | 1.5/8 | 33-35 | 1670 | 170 | 330 | 165 | 152 | 76 | 76 | 88 | 33 | 27,00 |
| ASKTA-48 | 43-48 | 1.3/4 - 1.7/8 | 36-41 | 2207 | 225 | 367 | 177 | 176 | 89 | 89 | 96 | 39 | 41,00 |
| ASKTA-54 | 49-54 | 2 - 2.1/8 | 42-45 | 2746 | 280 | 443 | 227 | 194 | 95 | 101 | 109 | 46 | 58,00 |
| ASKTA-56 | 55-60 | 2.1/4 - 2.3/8 | 46-48 | 3531 | 360 | 478 | 250 | 236 | 108 | 113 | 120 | 53 | 85,00 |
| ASKTA-62 | 61-68 | 2.1/2 - 2.5/8 | 50-54 | 4169 | 424 | 521 | 273 | 251 | 121 | 127 | 126 | 60 | 125,00 |
| ASKTA-70 | 70-74 | 2.3/4 - 2.7/8 | 56-62 | 4513 | 460 | 558 | 279 | 266 | 127 | 133 | 133 | 73 | 162,00 |
| ASKTA-75 | 75-80 | 3 - 3.1/8 | 64-67 | 5523 | 360 | 592 | 287 | 274 | 133 | 146 | 145 | 76 | 195,00 |

- Tolleranza sulle dimensioni ± 3%.
- Tolerance on dimensions ± 3%.

CAPOCORDA TESTA FUSA CHIUSO TIPO TE52Z
CLOSED SPELTER SOCKET TE52Z TYPE

Acciaio zincato a caldo
Hot dip galvanized steel

- Applicazione fune mediante zinco e/o resina EN 13411-4
- Efficienza dell'applicazione il 100% del carico di rottura della fune
- Dimensioni senza protezione alla corrosione
- Anchorage of the rope by molten zinc or polyester resin EN 13411-4
- Application efficiency 100% minimum breaking load of the rope
- Dimensions without corrosion protection



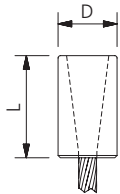
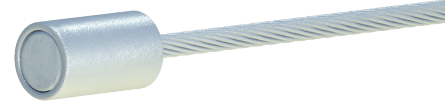
| Codice Code | Fune trefoli Wire rope | | Fune spiroidale Structural strand | MBF | | Dimensioni Dimensions | | | | | | Peso Weight |
|----------------|---------------------------|---------------|--------------------------------------|------|-----|--------------------------|---------|----------|---------|---------|---------|----------------|
| | Ø mm | Ø inch | Ø mm | kN | ton | L mm | H mm | Dt mm | B mm | C mm | E mm | kg |
| ASKTCH-10 | 8-10 | 5/16 - 3/8 | - | 117 | 12 | 105 | 48 | 43 | 17,5 | 14 | 25 | 0,50 |
| ASKTCH-13 | 11-13 | 7/16 - 1/2 | - | 196 | 20 | 122 | 58 | 52 | 23,4 | 18 | 30 | 0,70 |
| ASKTCH-16 | 14-16 | 9/16 - 5/8 | 11-13 | 245 | 25 | 141 | 66 | 68 | 26 | 21 | 37 | 1,50 |
| ASKTCH-19 | 18-19 | 3/4 | 14-16 | 392 | 40 | 167 | 78 | 76 | 32 | 27 | 42 | 2,10 |
| ASKTCH-22 | 20-22 | 7/8 | 18-19 | 539 | 55 | 191 | 90 | 92 | 38 | 33 | 47 | 3,60 |
| ASKTCH-26 | 23-26 | 1 | 20-22 | 735 | 75 | 217 | 103 | 104 | 44 | 36 | 57 | 5,80 |
| ASKTCH-30 | 27-30 | 1.1/8 | 23-26 | 882 | 90 | 243 | 116 | 114 | 51 | 39 | 63 | 7,00 |
| ASKTCH-35 | 31-35 | 1.1/4 - 1.3/8 | 28 | 1226 | 125 | 269 | 130 | 127 | 57 | 43 | 70 | 10,50 |
| ASKTCH-38 | 36-39 | 1.1/2 | 30-32 | 1471 | 150 | 307 | 155 | 136 | 63 | 51 | 79 | 13,00 |
| ASKTCH-42 | 40-42 | 1.5/8 | 33-35 | 1670 | 170 | 336 | 171 | 146 | 70 | 54 | 83 | 17,00 |
| ASKTCH-48 | 43-48 | 1.3/4 - 1.7/8 | 36-40 | 2207 | 225 | 388 | 198 | 171 | 76 | 55 | 93 | 26,00 |
| ASKTCH-54 | 49-54 | 2 - 2.1/8 | 42-45 | 2746 | 280 | 440 | 224 | 193 | 82 | 62 | 100 | 37,50 |
| ASKTCH-56 | 55-60 | 2.1/4 - 2.3/8 | 46-48 | 3531 | 360 | 475 | 247 | 216 | 92 | 73 | 112 | 50,00 |

- Tolleranza sulle dimensioni ± 3%.
- Tolerance on dimensions ± 3%.

CAPOCORDA TESTA FUSA CILINDRICO TIPO TE53Z
CYLINDRICAL SPELTER SOCKET TE53Z TYPE

Acciaio zincato a caldo
Hot dip galvanized steel

- Ancoraggio fune mediante zinco e/o resina EN 13411-4
- Efficienza dell'applicazione il 100% del carico di rottura della fune
- Dimensioni senza protezione alla corrosione
- Anchorage of the rope by molten zinc or polyester resin EN 13411-4
- Application efficiency 100% minimum breaking load of the rope
- Dimensions without corrosion protection

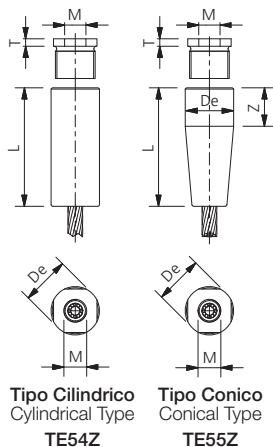
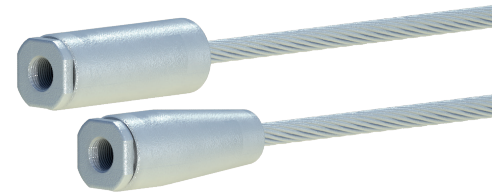


| Codice Code | Fune trefoli Wire rope | Fune spiroidale Structural strand | MBF | | Dimensioni Dimensions | | Peso Weight |
|----------------|---------------------------|--------------------------------------|------|------|--------------------------|---------|----------------|
| | Ø mm | Ø mm | kN | t | D mm | L mm | kg |
| TE53Z-14 | 14-16 | 14 | 225 | 22,9 | 42 | 72 | 0,45 |
| TE53Z-16 | 18-19 | 16 | 280 | 28,5 | 48 | 82 | 0,66 |
| TE53Z-18 | 20 | 18 | 350 | 35,7 | 54 | 92 | 0,97 |
| TE53Z-20 | 22 | 20 | 430 | 43,8 | 60 | 103 | 1,35 |
| TE53Z-22 | 24 | 22 | 500 | 51,0 | 66 | 113 | 1,80 |
| TE53Z-24 | 26 | 24 | 620 | 63,2 | 72 | 123 | 2,38 |
| TE53Z-26 | 28 | 26 | 660 | 67,3 | 78 | 133 | 2,99 |
| TE53Z-28 | 30 | 28 | 810 | 82,6 | 84 | 144 | 3,82 |
| TE53Z-30 | 32-34 | 30 | 930 | 96,8 | 90 | 154 | 4,70 |
| TE53Z-32 | 36 | 32 | 1030 | 105 | 96 | 164 | 5,71 |
| TE53Z-34 | 38 | 34 | 1200 | 126 | 102 | 174 | 6,92 |
| TE53Z-36 | 40 | 36 | 1310 | 134 | 108 | 184 | 8,14 |
| TE53Z-38 | 42 | 38 | 1450 | 148 | 114 | 195 | 9,71 |

CAPOCORDA TESTA FUSA CON FILETTO INTERNO TIPO TE54Z - TE55Z
INNER THREAD SPELTER SOCKET TE54Z - TE55Z TYPE

Acciaio zincato a caldo
Hot dip galvanized steel

- Ancoraggio fune mediante zinco e/o resina EN 13411-4
- Efficienza dell'applicazione il 100% del carico di rottura della fune
- Dimensioni senza protezione alla corrosione
- Anchorage of the rope by molten zinc or polyester resin EN 13411-4
- Application efficiency 100% minimum breaking load of the rope
- Dimensions without corrosion protection



| Codice Code | | Fune Rope | MBF kN | Dimensioni Dimensions | | | | | Peso Weight |
|-------------------------------------|-----------------------------|--------------|-----------|--------------------------|---------|---------|---------|---------|----------------|
| Tipo Cilindrico Cylindrical Type | Tipo Conico Conical Type | Ø mm | | De mm | L mm | M mm | Z mm | T mm | kg |
| TE54Z-14 | TE55Z-14 | 14 | 190 | 45 | 107 | 20 | 39 | 10 | 0,75 |
| TE54Z-16 | TE55Z-16 | 16 | 250 | 51 | 120 | 24 | 41 | 10 | 1,20 |
| TE54Z-18 | TE55Z-18 | 18 | 300 | 56 | 135 | 27 | 47 | 10 | 1,60 |
| TE54Z-20 | TE55Z-20 | 20 | 390 | 62 | 147 | 30 | 48 | 12 | 1,80 |
| TE54Z-22 | TE55Z-22 | 22 | 450 | 66 | 162 | 33 | 53 | 12 | 2,10 |
| TE54Z-24 | TE55Z-24 | 24 | 550 | 72 | 178 | 36 | 60 | 12 | 2,80 |
| TE54Z-26 | TE55Z-26 | 26 | 650 | 78 | 191 | 36 | 62 | 12 | 3,60 |
| TE54Z-28 | TE55Z-28 | 28 | 780 | 84 | 207 | 39 | 69 | 12 | 4,39 |
| TE54Z-30 | TE55Z-30 | 30 | 860 | 90 | 220 | 42 | 71 | 15 | 5,55 |
| TE54Z-32 | TE55Z-32 | 32 | 1050 | 96 | 234 | 45 | 75 | 15 | 6,60 |
| TE54Z-34 | TE55Z-34 | 34 | 1100 | 102 | 248 | 48 | 80 | 15 | 7,80 |
| TE54Z-36 | TE55Z-36 | 36 | 1250 | 108 | 263 | 50 | 84 | 15 | 9,40 |
| TE54Z-38 | TE55Z-38 | 38 | 1370 | 114 | 277 | 52 | 88 | 15 | 11,10 |
| TE54Z-40 | TE55Z-40 | 40 | 1520 | 120 | 292 | 56 | 93 | 15 | 12,90 |
| TE54Z-42 | TE55Z-42 | 42 | 1670 | 126 | 302 | 60 | 93 | 15 | 14,70 |
| TE54Z-44 | TE55Z-44 | 44 | 1880 | 132 | 316 | 60 | 97 | 15 | 17,20 |
| TE54Z-46 | TE55Z-46 | 46 | 2050 | 138 | 331 | 64 | 102 | 15 | 19,40 |
| TE54Z-48 | TE55Z-48 | 48 | 2180 | 144 | 341 | 64 | 102 | 15 | 22,20 |

- NOTE: Per assemblaggio strallo e accessori vedi pag. 15.
- REMARK: Socket assembly and handling device see pag. 15.

